

LEA Name : Haverford Township SD
Address : 50 East Eagle Road
Havertown , PA 19083

County : Delaware
AUN Number : 125234502
LEA Type : SD

**Annual Financial Report
Accuracy Certification Statement**

For Fiscal Year Ending

6/30/2020

Pennsylvania Department of Education

&

Office of Comptroller Operations

PDE-2056: Intermediate Unit

PDE-2057: School District, AVTS/CTC, Charter School,
and Special Program Jointure

CERTIFICATION: By signing this page I agree that the electronic data submitted is a complete and accurate statement of the financial operations and status of the local education agency for the fiscal year. It has been prepared in accordance with generally accepted accounting principles and established Commonwealth of PA reporting guidelines.



Chief School Administrator Signature

12/8/20

Date



Board Secretary Signature

12/8/20

Date

Brian Keiser

Contact Person

bkeiser@haverfordsd.net

Contact Person E-mail Address

(610)853-5900

Ext :

Contact Person Telephone Number

Contact Person Fax Number

Audit Certification
Annual Financial Report:
For Fiscal Year Ending **6/30/2020**
(Pursuant to PA School Code Section 218(b))


LEA Name : Haverford Township SD
AUN Number : 125234502
County : Delaware

Audit Certification Due: 12/31/2020

This certification is applicable to the Annual Financial Report data submitted through the Consolidated Financial Reporting System (CFRS).

CERTIFICATION: By signing this page I agree that the financial statements of the school have been properly audited as noted above pursuant to Article XXIV, and in the auditor's professional opinion, the Annual Financial Report (PDE-2057) submitted through CFRS is materially consistent with the audited financial statements.

Chief School Administrator




Signature

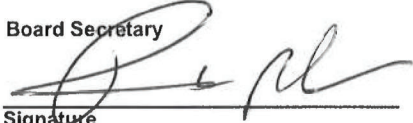


Date

Board Secretary



Signature



Date

Brian Keiser

Contact Person

bkeiser@haverfordsd.net

Contact Person E-mail Address

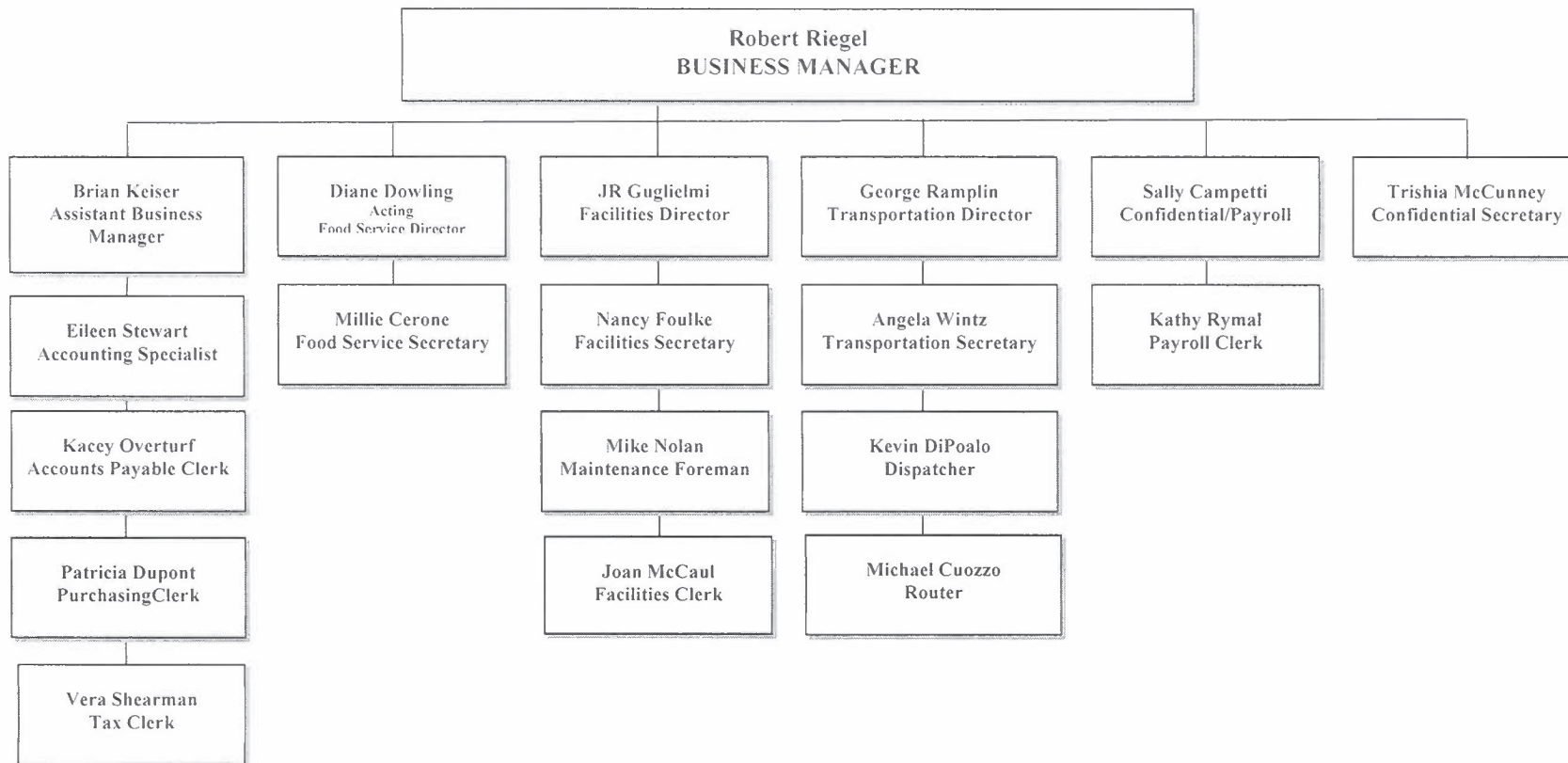
(610)853-5900

Ext :

Contact Person Telephone Number

Contact Person Fax Number

SCHOOL DISTRICT OF HAVERFORD TOWNSHIP
Organizational Chart 2019-20 School Year



As of June 2020



Book	Policy Manual
Section	700 Property
Title	Property Records
Code	706
Status	Active
Adopted	August 16, 2010

Purpose

The Board directs that adequate property records and inventory records be maintained on all land, buildings and physical property under the control of the district.

Authority

The Board directs that a complete inventory be maintained by physical count of all district-owned equipment. It further directs that property records be maintained of all buildings and grounds under the control of the district.

Definition

For purposes of this policy, **equipment** shall mean a unit of furniture or furnishings, an instrument, a machine, an apparatus or a set of articles which retains its shape and appearance with use, is nonexpendable, and does not lose its identity when incorporated into a more complex unit.

Replacement

All district equipment shall be placed on a replacement schedule as soon as feasible. The Superintendent shall include in his/her recommended budget funds to maintain the replacement schedule.

Requests for replacement of equipment shall be submitted by principals and other supervisors in March, on regular budget request forms. Replacement of equipment, other than approved in the adopted budget, shall be considered in an emergency situation only.

Transfer and Disposal

The Business Manager will develop procedures to ensure that, when property or equipment is transferred from one location to another, the permanent inventory file will reflect said transfer.

The Business Manager shall develop procedures for disposing of obsolete and unused equipment, including the elimination.

Inventories

The Business Manager shall develop procedures for conducting periodic inventories of school property, and maintain a system that accurately reflects the movement of the equipment.

<u>Val Number</u>	<u>Description</u>	<u>Justification</u>
42420	<p>Expenditure Detail: Total current year 2700-513 expenditure varies from prior year by 10%. Correct the data or enter a justification.</p> <p>2700-513, AFR Exp Detail: \$6,544.00 2700-513, PY AFR Amount: \$45,696.06</p>	<p>Mandated closures resulted in less contracted service expense for 2019-20 school year</p>
50410	<p>SESS - 2140 Psychological Services: SESS Schedule amounts for Special Education vary from prior year by 40% or more. Correct the data or enter a justification.</p> <p>SESS Schedule 2140: \$14,814.38 Prior Year SESS Schedule 2140: \$27,519.84</p>	<p>Mandated closures resulted in less expense for 2019-20 school year</p>

LEA : 125234502 Haverford Township SD

Printed 12/30/2020 2:17:13 PM

Amounts Expressed in Whole Dollars		<u>General Fund</u> <u>(10)</u>	<u>Student Sponsored</u> <u>Activity Fund</u> <u>(21)</u>	<u>Public Purpose Trust</u> <u>(27)</u>	<u>Other Compt Approved</u> <u>(28)</u>	<u>Athletic / Activity</u> <u>(29)</u>
Assets And Deferred Outflows Of Resources						
Assets						
0100	Cash and Cash Equivalents	24,782,826				
0110	Investments					
0120	Taxes Receivable	2,260,162				
0130	Due From Other Funds	797,180				
0141	Due From Other Governments	5,317,380				
0142	State Revenue Receivable					
0143	Federal Revenue Receivable					
0145	Other Intergovernmental Revenue Receivable					
0146	Due from Primary Government					
0147	Due from Component Unit					
0150	Other Receivables	894,320				
0170	Inventories					
0180	Prepaid Expenses (Expenditures)	2,575				
0190	Other Current Assets					
Total Assets		\$34,054,443				
0910	Deferred Outflows of Resources					
Total Assets And Deferred Outflows Of Resources		\$34,054,443				

LEA : 125234502 Haverford Township SD

Printed 12/30/2020 2:17:13 PM

Amounts Expressed in Whole Dollars		<u>Capital Reserve (690.</u> <u>1850)</u> <u>(31)</u>	<u>Capital Reserve (1431)</u> <u>(32)</u>	<u>Other Capital Projects</u> <u>Fund</u> <u>(39)</u>	<u>Debt Service</u> <u>(40)</u>	<u>Permanent</u> <u>(90)</u>
Assets And Deferred Outflows Of Resources						
Assets						
0100	Cash and Cash Equivalents			30,609,712		
0110	Investments					
0120	Taxes Receivable					
0130	Due From Other Funds					
0141	Due From Other Governments					
0142	State Revenue Receivable					
0143	Federal Revenue Receivable					
0145	Other Intergovernmental Revenue Receivable					
0146	Due from Primary Government					
0147	Due from Component Unit					
0150	Other Receivables					
0170	Inventories					
0180	Prepaid Expenses (Expenditures)					
0190	Other Current Assets					
Total Assets				\$30,609,712		
0910	Deferred Outflows of Resources					
Total Assets And Deferred Outflows Of Resources				\$30,609,712		

LEA : 125234502 Haverford Township SD

Printed 12/30/2020 2:17:13 PM

Amounts Expressed in Whole Dollars		<u>Total Governmental Funds</u>
Assets And Deferred Outflows Of Resources		
Assets		
0100	Cash and Cash Equivalents	55,392,538
0110	Investments	
0120	Taxes Receivable	2,260,162
0130	Due From Other Funds	797,180
0141	Due From Other Governments	5,317,380
0142	State Revenue Receivable	
0143	Federal Revenue Receivable	
0145	Other Intergovernmental Revenue Receivable	
0146	Due from Primary Government	
0147	Due from Component Unit	
0150	Other Receivables	894,320
0170	Inventories	
0180	Prepaid Expenses (Expenditures)	2,575
0190	Other Current Assets	
Total Assets		\$64,664,155
0910	Deferred Outflows of Resources	
Total Assets And Deferred Outflows Of Resources		\$64,664,155

LEA : 125234502 Haverford Township SD

Printed 12/30/2020 2:17:13 PM

Amounts Expressed in Whole Dollars	<u>General Fund</u> <u>(10)</u>	<u>Student Sponsored</u> <u>Activity Fund</u> <u>(21)</u>	<u>Public Purpose Trust</u> <u>(27)</u>	<u>Other Compt Approved</u> <u>(28)</u>	<u>Athletic / Activity</u> <u>(29)</u>
Liabilities And Deferred Inflows Of Resources And Fund Balances					
Liabilities					
0400 Due to Other Funds					
0411 Due to Other Governments					
0412 Due to Primary Government					
0413 Due to Component Unit					
0420 Accounts Payable	955,943				
0430 Contracts Payable					
0440 Current Portion of Long-Term Debt					
0450 Short-Term Payables					
0461 Accrued Salaries and Benefits	13,443,305				
0462 Payroll Deductions and Withholding					
0480 Unearned Revenues	46,191				
0490 Other Current Liabilities					
Total Liabilities	\$14,445,439				
0950 Deferred Inflows of Resources	1,894,945				
Fund Balances					
0810 Nonspendable Fund Balance	2,575				
0820 Restricted Fund Balance					
0830 Committed Fund Balance	3,042,888				
0840 Assigned Fund Balance	843,881				
0850 Unassigned Fund Balance	13,824,715				
Total Fund Balances	\$17,714,059				
Total Liabilities, Deferred Inflows Of Resources And Fund Balances	\$34,054,443				

LEA : 125234502 Haverford Township SD

Printed 12/30/2020 2:17:13 PM

Amounts Expressed in Whole Dollars		<u>Capital Reserve (690.</u> <u>1850)</u> <u>(31)</u>	<u>Capital Reserve (1431)</u> <u>(32)</u>	<u>Other Capital Projects</u> <u>Fund</u> <u>(39)</u>	<u>Debt Service</u> <u>(40)</u>	<u>Permanent</u> <u>(90)</u>
Liabilities And Deferred Inflows Of Resources And Fund Balances						
Liabilities						
0400	Due to Other Funds			170,493		
0411	Due to Other Governments					
0412	Due to Primary Government					
0413	Due to Component Unit					
0420	Accounts Payable			2,392,067		
0430	Contracts Payable					
0440	Current Portion of Long-Term Debt					
0450	Short-Term Payables					
0461	Accrued Salaries and Benefits					
0462	Payroll Deductions and Withholding					
0480	Unearned Revenues					
0490	Other Current Liabilities					
Total Liabilities				\$2,562,560		
0950	Deferred Inflows of Resources					
Fund Balances						
0810	Nonspendable Fund Balance					
0820	Restricted Fund Balance					
0830	Committed Fund Balance			28,047,152		
0840	Assigned Fund Balance					
0850	Unassigned Fund Balance					
Total Fund Balances				\$28,047,152		
Total Liabilities, Deferred Inflows Of Resources And Fund Balances				\$30,609,712		

LEA : 125234502 Haverford Township SD

Printed 12/30/2020 2:17:13 PM

Amounts Expressed in Whole Dollars		<u>Total Governmental Funds</u>
Liabilities And Deferred Inflows Of Resources And Fund Balances		
Liabilities		
0400 Due to Other Funds		170,493
0411 Due to Other Governments		
0412 Due to Primary Government		
0413 Due to Component Unit		
0420 Accounts Payable		3,348,010
0430 Contracts Payable		
0440 Current Portion of Long-Term Debt		
0450 Short-Term Payables		
0461 Accrued Salaries and Benefits		13,443,305
0462 Payroll Deductions and Withholding		
0480 Unearned Revenues		46,191
0490 Other Current Liabilities		
Total Liabilities		\$17,007,999
0950 Deferred Inflows of Resources		1,894,945
Fund Balances		
0810 Nonspendable Fund Balance		2,575
0820 Restricted Fund Balance		
0830 Committed Fund Balance		31,090,040
0840 Assigned Fund Balance		843,881
0850 Unassigned Fund Balance		13,824,715
Total Fund Balances		\$45,761,211
Total Liabilities, Deferred Inflows Of Resources And Fund Balances		\$64,664,155

Amounts Expressed in Whole Dollars	<u>General Fund</u> <u>(10)</u>	<u>Student Sponsored</u> <u>Activity Fund</u> <u>(21)</u>	<u>Public Purpose Trust</u> <u>(27)</u>	<u>Other Compt Approved</u> <u>(28)</u>	<u>Athletic / Activity</u> <u>(29)</u>
Revenues					
6000 Revenue from Local Sources	103,227,336				
7000 Revenue from State Sources	22,138,615				
8000 Revenue from Federal Sources	813,949				
Total Revenues	\$126,179,900				
Expenditures					
1000 Instruction	75,847,304				
2000 Support Services	35,211,737				
3000 Operation of Non-Instructional Services	1,559,750				
4000 Facilities Acquisition, Construction and Improvement Services					
5110 Debt Service	9,917,826				
5130 Refund of Prior Year Revenues / Receipts	8,488				
Total Expenditures	\$122,545,105				
Excess (Deficiency) Of Revenues Over Expenditures	\$3,634,795				
Other Financing Sources (Uses)					
9110 Face Value of Bonds Issued					
9120 Proceeds from Refunding of Bonds					
9130 Bond Premiums					
9200 Proceeds from Extended-Term Financing					
9300 Interfund Transfers - IN					
9400 Sale of or Compensation for Loss of Fixed Assets					
9710 Transfers from Component Units					
9720 Transfers from Primary Governments					
9910 Other Financing Sources Not Listed in the 9000 Series					
9990 Insurance Recoveries					
5120 Debt Service – Refunded Bonds					
5150 Bond Discounts					
5200 Interfund Transfers – Out	1,272,008				
5300 Transfers Out to Component Units/Primary Governments					
Total Other Financing Sources (Uses)	(\$1,272,008)				

Amounts Expressed in Whole Dollars	<u>Capital Reserve (690.1850)</u> <u>(31)</u>	<u>Capital Reserve (1431)</u> <u>(32)</u>	<u>Other Capital Projects</u> <u>Fund</u> <u>(39)</u>	<u>Debt Service</u> <u>(40)</u>	<u>Permanent</u> <u>(90)</u>
Revenues					
6000 Revenue from Local Sources			237,935		
7000 Revenue from State Sources					
8000 Revenue from Federal Sources					
Total Revenues			\$237,935		
Expenditures					
1000 Instruction					
2000 Support Services			956,341		
3000 Operation of Non-Instructional Services					
4000 Facilities Acquisition, Construction and Improvement Services			15,371,376		
5110 Debt Service					
5130 Refund of Prior Year Revenues / Receipts					
Total Expenditures			\$16,327,717		
Excess (Deficiency) Of Revenues Over Expenditures			(\$16,089,782)		
Other Financing Sources (Uses)					
9110 Face Value of Bonds Issued			34,995,000		
9120 Proceeds from Refunding of Bonds			8,315,000		
9130 Bond Premiums			2,937,944		
9200 Proceeds from Extended-Term Financing			673,522		
9300 Interfund Transfers - IN			1,272,008		
9400 Sale of or Compensation for Loss of Fixed Assets					
9710 Transfers from Component Units					
9720 Transfers from Primary Governments					
9910 Other Financing Sources Not Listed in the 9000 Series					
9990 Insurance Recoveries					
5120 Debt Service – Refunded Bonds			10,091,086		
5150 Bond Discounts					
5200 Interfund Transfers – Out					
5300 Transfers Out to Component Units/Primary Governments					
Total Other Financing Sources (Uses)			\$38,102,388		

LEA : 125234502 Haverford Township SD

Printed 12/30/2020 2:17:20 PM

Amounts Expressed in Whole Dollars		<u>Total Governmental Funds</u>
Revenues		
6000	Revenue from Local Sources	103,465,271
7000	Revenue from State Sources	22,138,615
8000	Revenue from Federal Sources	813,949
Total Revenues		\$126,417,835
Expenditures		
1000	Instruction	75,847,304
2000	Support Services	36,168,078
3000	Operation of Non-Instructional Services	1,559,750
4000	Facilities Acquisition, Construction and Improvement Services	15,371,376
5110	Debt Service	9,917,826
5130	Refund of Prior Year Revenues / Receipts	8,488
Total Expenditures		\$138,872,822
Excess (Deficiency) Of Revenues Over Expenditures		(\$12,454,987)
Other Financing Sources (Uses)		
9110	Face Value of Bonds Issued	34,995,000
9120	Proceeds from Refunding of Bonds	8,315,000
9130	Bond Premiums	2,937,944
9200	Proceeds from Extended-Term Financing	673,522
9300	Interfund Transfers - IN	1,272,008
9400	Sale of or Compensation for Loss of Fixed Assets	
9710	Transfers from Component Units	
9720	Transfers from Primary Governments	
9910	Other Financing Sources Not Listed in the 9000 Series	
9990	Insurance Recoveries	
5120	Debt Service – Refunded Bonds	10,091,086
5150	Bond Discounts	
5200	Interfund Transfers – Out	1,272,008
5300	Transfers Out to Component Units/Primary Governments	
Total Other Financing Sources (Uses)		\$36,830,380

Amounts Expressed in Whole Dollars		<u>General Fund</u> <u>(10)</u>	<u>Student Sponsored</u> <u>Activity Fund</u> <u>(21)</u>	<u>Public Purpose Trust</u> <u>(27)</u>	<u>Other Compt Approved</u> <u>(28)</u>	<u>Athletic / Activity</u> <u>(29)</u>
Special And Extraordinary Items						
9920	Special Items – Gains					
9930	Extraordinary Items – Gains					
5520	Special Items – Losses					
5530	Extraordinary Items – Losses					
Net Change In Fund Balances		\$2,362,787				
Fund Balance						
0001	Fund Balance - Beginning of Fiscal Year	15,351,272				
Fund Balance - End Of Year		\$17,714,059				

Amounts Expressed in Whole Dollars		<u>Capital Reserve (690.</u> <u>1850)</u> <u>(31)</u>	<u>Capital Reserve (1431)</u> <u>(32)</u>	<u>Other Capital Projects</u> <u>Fund</u> <u>(39)</u>	<u>Debt Service</u> <u>(40)</u>	<u>Permanent</u> <u>(90)</u>
Special And Extraordinary Items						
9920	Special Items – Gains					
9930	Extraordinary Items – Gains					
5520	Special Items – Losses					
5530	Extraordinary Items – Losses					
Net Change In Fund Balances				\$22,012,606		
Fund Balance						
0001	Fund Balance - Beginning of Fiscal Year			6,034,546		
Fund Balance - End Of Year				\$28,047,152		

Amounts Expressed in Whole Dollars		<u>Total Governmental Funds</u>
Special And Extraordinary Items		
9920	Special Items – Gains	
9930	Extraordinary Items – Gains	
5520	Special Items – Losses	
5530	Extraordinary Items – Losses	
Net Change In Fund Balances		\$24,375,393
Fund Balance		
0001	Fund Balance - Beginning of Fiscal Year	21,385,818
Fund Balance - End Of Year		\$45,761,211

LEA : 125234502 Haverford Township SD

Printed 12/30/2020 2:17:25 PM

Amounts Expressed in Whole Dollars	Food Service (51)	Child Care Operations (52)	Other Enterprise (58)	TOTAL	Internal Service (60)
Assets And Deferred Outflows Of Resources					
Current Assets					
0100 Cash and Cash Equivalents	94,179			94,179	
0110 Investments					
0130 Due From Other Funds					
0141 Due From Other Governments					
0142 State Revenue Receivable					
0143 Federal Revenue Receivable					
0146 Due from Primary Government					
0147 Due from Component Unit					
0150 Other Receivables	31,287			31,287	
0170 Inventories	46,162			46,162	
0180 Prepaid Expenses (Expenditures)					10,356,017
0190 Other Current Assets					
Total Current Assets	\$171,628			\$171,628	\$10,356,017
Noncurrent Assets					
0211 Land					
0212 Site Improvements (Net)					
0220 Buildings and Building Improvements (Net)					
0230 Machinery, Equipment and Furniture (Net)					
0250 Construction in Progress					
0260 Long Term Prepayments					
0290 Other Noncurrent Assets	465,598			465,598	
Total Noncurrent Assets	\$465,598			\$465,598	
0910 Deferred Outflows of Resources	310,333			310,333	
Total Assets And Deferred Outflows Of Resources	\$947,559			\$947,559	\$10,356,017

LEA : 125234502 Haverford Township SD

Printed 12/30/2020 2:17:25 PM

Amounts Expressed in Whole Dollars	<u>Food Service</u> <u>(51)</u>	<u>Child Care</u> <u>Operations</u> <u>(52)</u>	<u>Other Enterprise</u> <u>(58)</u>	<u>TOTAL</u>	<u>Internal Service</u> <u>(60)</u>
Liabilities And Deferred Inflows Of Resources And Net Position					
Current Liabilities					
0400 Due to Other Funds	626,687			626,687	
0411 Due to Other Governments					
0413 Due to Component Unit					
0420 Accounts Payable	32,828			32,828	
0430 Contracts Payable					
0440 Current Portion of Long-Term Debt					
0450 Short-Term Payables					
0461 Accrued Salaries and Benefits	92,741			92,741	
0462 Payroll Deductions and Withholding					
0480 Unearned Revenues	95,667			95,667	
0490 Other Current Liabilities					
Total Current Liabilities	\$847,923			\$847,923	
Noncurrent Liabilities					
0510 Bonds Payable					
0520 Extended-Term Financing Agreements Payable					
0530 Lease-Purchase Obligations					
0540 Accumulated Compensated Absences					
0550 Authority Lease Obligations					
0560 Other Post-Employment Benefits (OPEB)	101,864			101,864	
0570 Net Pension Liability	2,240,622			2,240,622	
0599 Other Noncurrent Liabilities					
Total Noncurrent Liabilities	\$2,342,486			\$2,342,486	
Total Liabilities	\$3,190,409			\$3,190,409	
0950 Deferred Inflows of Resources	86,354			86,354	
Net Position					
0791 Net Investment in Capital Assets	465,598			465,598	
0008 Restricted Net Position (0792 – 0798)					
0799 Unrestricted Net Position	(2,794,802)			(2,794,802)	10,356,017
Total Net Position	(\$2,329,204)			(\$2,329,204)	\$10,356,017
Total Liabilities And Deferred Inflows Of Resources And Net Position	\$947,559			\$947,559	\$10,356,017

Amounts Expressed in Whole Dollars	<u>Food Service</u> <u>(51)</u>	<u>Child Care Operations</u> <u>(52)</u>	<u>Other Enterprise</u> <u>(58)</u>	<u>TOTAL</u>	<u>Internal Service</u> <u>(60)</u>
Operating Revenues					
6600 Food Service Revenue	983,192			983,192	
0071 Charges for Services					14,544,447
0072 Other Operating Revenue					
Total Operating Revenues	\$983,192			\$983,192	\$14,544,447
Operating Expenses					
100 Personnel Services – Salaries	685,656			685,656	
200 Personnel Services – Employee Benefits	294,739			294,739	10,793,767
300 Purchased Professional and Technical Services					1,024,026
400 Purchased Property Services	53,457			53,457	
500 Other Purchased Services	97,848			97,848	
600 Supplies	587,321			587,321	
740 Depreciation	90,168			90,168	
810 Dues and Fees					
890 Miscellaneous Expenditures	266			266	
Total Operating Expenses	\$1,809,455			\$1,809,455	\$11,817,793
Operating Income (Loss)	(\$826,263)			(\$826,263)	\$2,726,654
Non Operating Revenues (Expenses)					
6500 Earnings on Investments	2,777			2,777	133,553
6920 Contributions and Donations from Private Sources					
6930 Gains or Losses on Sale of Fixed Assets					
6991 Refunds of a Prior Year Expenditure					
7000 Revenue from State Sources	160,091			160,091	
8000 Revenue from Federal Sources	328,289			328,289	
9990 Insurance Recoveries					
820 Claims and Judgments Against the LEA					
830 Interest					
TOTAL Non Operating Revenues (Expenses)	\$491,157			\$491,157	\$133,553
Income (Loss) Before Contributions And Transfers	(\$335,106)			(\$335,106)	\$2,860,207

Amounts Expressed in Whole Dollars	<u>Food Service</u> <u>(51)</u>	<u>Child Care Operations</u> <u>(52)</u>	<u>Other Enterprise</u> <u>(58)</u>	<u>TOTAL</u>	<u>Internal Service</u> <u>(60)</u>
Contributions, Transfers, and Special and Extraordinary Items					
5200 Interfund Transfers – Out					
5300 Transfers Out to Component Units/Primary Governments					
5520 Special Items – Losses					
5530 Extraordinary Items – Losses					
9300 Interfund Transfers - IN					
9500 Capital Contributions					
9700 Transfers IN From Component Units/Primary Governments					
9920 Special Items – Gains					
9930 Extraordinary Items – Gains					
Change In Net Position	(\$335,106)			(\$335,106)	\$2,860,207
0002 Net Position - Beginning of Fiscal Year	(1,994,098)			(1,994,098)	7,495,810
0003 Accounting Changes / Residual Equity Transfers					
Net Position - End Of Year	(\$2,329,204)			(\$2,329,204)	\$10,356,017

LEA : 125234502 Haverford Township SD

Printed 12/30/2020 2:17:39 PM

Amounts Expressed in Whole Dollars	<u>Food Service</u> <u>(51)</u>	<u>Child Care Operations</u> <u>(52)</u>	<u>Other Enterprise</u> <u>(58)</u>	<u>TOTAL</u>	<u>Internal Service(60)</u>
Cash Flows From Operating Activities					
0011 Cash Receipts From Users	1,035,547			1,035,547	
0012 Cash Receipts From Assessments Made to Other Funds					14,544,447
0013 Cash Receipts From Earnings on Investments					
0014 Cash Receipts From Other Operating Revenue					
0015 Cash Payments To Employees For Services	891,895			891,895	
0016 Cash Payments For Insurance Claims					13,653,974
0017 Cash Payments To Suppliers For Goods and Services	706,223			706,223	
0018 Cash Payments For Other Operating Expenses					1,024,026
Net Cash Provided By (Used For) Operating Activities	(\$562,571)			(\$562,571)	(\$133,553)
Cash Flows From Non-Capital Financing Activities					
0021 Receipts From Local Sources - 6000					
0022 Receipts From State Sources - 7000	158,654			158,654	
0023 Receipts From Federal Sources -8000	260,890			260,890	
0024 Notes and Loans Received (Repaid)					
0025 Interest Paid on Notes/Loans - 5100-830					
0026 Operating Transfers In (Out)/Residual Equity Trans					
0027 Operating Transfers In (Out) Primary Government / Comp Unit					
0028 Receipts From Refund of Prior Year Expenditures - 6991					
0029 Special and Extraordinary Gains (losses)					
0030 Receipts from Insurance Recoveries -9990					
Net Cash Prov By (Used for) Non-Capital Financing Activities	\$419,544			\$419,544	
Cash Flows From Capital and Related Financing Activities					
0031 Payments For Fac Acq, Const, and Imp - 4000					
0032 Gain / (Loss) on Sale of Fixed Assets - 6930					
0033 Proceeds From Extended Term Financing - 9200					
0034 Principal Paid on Financing Agreements					
0035 Interest Paid on Financing Agreements - 5100-830					
0036 (Inc) Dec in Contributed Capital					
Net Cash Prov By (Used for) Capital and Related Financing Activities					
Cash Flows From Investing Activities					
0041 Earnings on Investments - 6500	2,777			2,777	133,553
0042 Purchase of Inv Securities / Deposits to Inv Pools					
0043 Receipts From Investment Pool Withdrawals					
0044 Proceeds from Sale and Maturity of Inv Securities					

LEA : 125234502 Haverford Township SD

Printed 12/30/2020 2:17:39 PM

0045 Loans Received (Paid)

Net Cash Prov By (Used for) Investing Activities	\$2,777	\$2,777	\$133,553
--	---------	---------	-----------

LEA : 125234502 Haverford Township SD

Printed 12/30/2020 2:17:39 PM

	Food Service (51)	Child Care Operations (52)	Other Enterprise (58)	TOTAL	Internal Service (60)
Net Increase (Decrease) in Cash Flows	(140,250)			(140,250)	
0004 Cash and Cash Equivalents Beginning of Year	234,429			234,429	
Cash and Cash Equivalents at Year End	\$94,179			\$94,179	
Reconciliation of Operating Income (Loss) To Net Cash Provided by (Used For) Operating Activities					
0005 Operating Income (Loss) per REP	(826,263)			(826,263)	2,726,654
Adjustments					
0051 Depreciation and Net Amortization	90,168			90,168	
0052 Provision for Uncollectible Accounts					
0053 Other Adjustments	54,627			54,627	
Effect of Changes in Assets, Liabilities, Deferred Outflows and Deferred Inflows					
0054 (Inc) Dec In Accounts Receivable (0120-0150)	8,356			8,356	
0055 Advances to Other Funds (0160)					
0056 (Inc) Dec in Inventories (0170)	(41,875)			(41,875)	
0057 (Inc) Dec in Prepaid Expenses (0180)					(2,860,207)
0058 (Inc) Dec in Other Current or Noncurrent Assets					
0064 Deferred Outflows (0910)	8,658			8,658	
0059 Inc (Dec) in Accounts Payable (0400-0450)	19,917			19,917	
0060 Inc (Dec) in Accrued Salaries/Benefits (0461)	3,188			3,188	
0065 Inc (Dec) in Net Pension Liabilities (0570)	(244,069)			(244,069)	
0066 Inc (Dec) in Other Postemp Benefit Oblig (0560)	(6,051)			(6,051)	
0061 Inc (Dec) in Payroll Deductions/Withholding (0462)					
0062 Inc (Dec) in Unearned Revenue (0480)	43,999			43,999	
0063 Inc (Dec) in Other Current or Noncurrent Liabilities	287,236			287,236	
0067 Deferred Inflows (0950)	39,538			39,538	
Total Adjustments	\$263,692			\$263,692	(\$2,860,207)
Cash Provided By (Used for) Total	(\$562,571)			(\$562,571)	(\$133,553)

COMBINED STATEMENT OF CASH FLOWS
SCHEDULE OF NONCASH INVESTING, CAPITAL, AND FINANCING ACTIVITIES

Explanation of Transaction and Balance Sheet Effect	Amount
USDA Donated Commodities	54,627
Total	\$54,627

LEA : 125234502 Haverford Township SD

Printed 12/30/2020 2:17:42 PM

Amounts Expressed in Whole Dollars		<u>Private Purpose Trust</u> <u>(71)</u>	<u>Investment Trust</u> <u>(72)</u>	<u>Pension Trust</u> <u>(73)</u>	<u>Student Activity Custodial</u> <u>(81)</u>
Assets And Deferred Outflows Of Resources					
Assets					
0100	Cash and Cash Equivalents	124,344			683,730
0110	Investments				
0130	Due From Other Funds				
0140	Due from Other Governments, Primary Government and Component Units				
0150	Other Receivables				
0170	Inventories				
0180	Prepaid Expenses (Expenditures)				
0190	Other Current Assets				
0220	Buildings and Building Improvements (Net)				
0230	Machinery, Equipment and Furniture (Net)				
Total Assets		\$124,344			\$683,730
0910	Deferred Outflows of Resources				
Total Assets And Deferred Outflows Of Resources		\$124,344			\$683,730

LEA : 125234502 Haverford Township SD

Printed 12/30/2020 2:17:42 PM

Amounts Expressed in Whole Dollars		<u>Other Custodial</u> <u>(89)</u>	<u>Fiduciary Component Units</u> <u>(98)</u>	<u>Total Fiduciary Funds</u>
Assets And Deferred Outflows Of Resources				
Assets				
0100	Cash and Cash Equivalents			808,074
0110	Investments			
0130	Due From Other Funds			
0140	Due from Other Governments, Primary Government and Component Units			
0150	Other Receivables			
0170	Inventories			
0180	Prepaid Expenses (Expenditures)			
0190	Other Current Assets			
0220	Buildings and Building Improvements (Net)			
0230	Machinery, Equipment and Furniture (Net)			
Total Assets				\$808,074
0910	Deferred Outflows of Resources			
Total Assets And Deferred Outflows Of Resources				\$808,074

LEA : 125234502 Haverford Township SD

Printed 12/30/2020 2:17:42 PM

Amounts Expressed in Whole Dollars		<u>Private Purpose Trust</u>	<u>Investment Trust</u>	<u>Pension Trust</u>	<u>Student Activity Custodial</u>
		(71)	(72)	(73)	(81)
Liabilities, Deferred Inflows Of Resources And Net Position					
Liabilities					
0400	Due to Other Funds				683,730
0410	Due to Other Governments, Primary Government and Component Units				
0420	Accounts Payable				
0430	Contracts Payable				
0450	Short-Term Payables				
0460	Payroll Accruals and Withholdings				
0480	Unearned Revenues				
0490	Other Current Liabilities				
Total Liabilities					\$683,730
0950	Deferred Inflows of Resources				
Net Position					
0791	Net Investment in Capital Assets				
0009	Restricted Net Position (0792 – 0798)	124,344			
0799	Unrestricted Net Position				
Total Net Position		\$124,344			
Total Liabilities, Deferred Inflows Of Resources And Net Position		\$124,344			\$683,730

LEA : 125234502 Haverford Township SD

Printed 12/30/2020 2:17:42 PM

Amounts Expressed in Whole Dollars		<u>Other Custodial</u> <u>(89)</u>	<u>Fiduciary Component Units</u> <u>(98)</u>	<u>Total Fiduciary Funds</u>
Liabilities, Deferred Inflows Of Resources And Net Position				
Liabilities				
0400	Due to Other Funds			683,730
0410	Due to Other Governments, Primary Government and Component Units			
0420	Accounts Payable			
0430	Contracts Payable			
0450	Short-Term Payables			
0460	Payroll Accruals and Withholdings			
0480	Unearned Revenues			
0490	Other Current Liabilities			
Total Liabilities				\$683,730
0950	Deferred Inflows of Resources			
Net Position				
0791	Net Investment in Capital Assets			
0009	Restricted Net Position (0792 – 0798)			124,344
0799	Unrestricted Net Position			
Total Net Position				\$124,344
Total Liabilities, Deferred Inflows Of Resources And Net Position				\$808,074

LEA : 125234502 Haverford Township SD

Printed 12/30/2020 2:17:45 PM

Amounts Expressed in Whole Dollars	<u>Private Purpose Trust</u> (71)	<u>Investment Trust</u> (72)	<u>Pension Trust</u> (73)	<u>Student Activity</u> <u>Custodial</u> (81)	<u>Other Custodial</u> (89)	<u>Fiduciary Component</u> <u>Units</u> (98)
Additions						
0091 Gifts and Contributions	40,223					
0095 Net Investment Earnings						
0092 Other Additions						
Deductions						
0093 Scholarships Awarded	48,845					
0094 Other Deductions						
Change In Net Position	(\$8,622)					
0006 Net Position – Beginning of Fiscal Year	132,966					
0007 Net Position Held in Trust for Pension Benefits						
Net Position - End of Fiscal Year	\$124,344					

LEA : 125234502 Haverford Township SD

Printed 12/30/2020 2:17:45 PM

Amounts Expressed in Whole Dollars		<u>Total Fiduciary</u>
		<u>Funds</u>
Additions		
0091	Gifts and Contributions	40,223
0095	Net Investment Earnings	
0092	Other Additions	
Deductions		
0093	Scholarships Awarded	48,845
0094	Other Deductions	
Change In Net Position		(\$8,622)
0006	Net Position – Beginning of Fiscal Year	132,966
0007	Net Position Held in Trust for Pension Benefits	
Net Position - End of Fiscal Year		\$124,344

LEA : 125234502 Haverford Township SD

General Fund (10)

Printed 12/30/2020 2:17:48 PM

Page - 1 of 3

	Revenue Reported In Current Year	Current Year Tax Accrual	Prior Year Tax Accrual	Taxes Collected In Current Year
Revenue from Local Sources				
6111 Current Real Estate Taxes	97,330,452.72			97,330,452.72
6112 Interim Real Estate Taxes	385,062.40			385,062.40
6113 Public Utility Realty Taxes	90,649.83			90,649.83
6153 Current Act 511 Real Estate Transfer Taxes	1,656,148.46			1,656,148.46
6411 Delinquent Real Estate Taxes	1,373,280.60			1,373,280.60
6500 Earnings on Investments	845,451.46			
6700 Revenues from LEA Activities	65,124.25			
6832 Federal IDEA Revenue Received as Pass Through	917,388.00			
6910 Rentals	79,475.55			
6942 Summer School Tuition	13,364.25			
6991 Refunds of a Prior Year Expenditure	414,410.36			
6999 Other Revenues Not Specified Above	56,528.19			
TOTAL Revenue from Local Sources	\$103,227,336.07			\$100,835,594.01

	Revenue Reported In Current Year			
<u>Revenue from State Sources</u>				
7111 Basic Education Funding-Formula	3,631,995.66			
7112 Basic Education Funding-Social Security	1,967,582.52			
7160 Tuition for Orphans Subsidy	13,208.91			
7271 Special Education funds for School-Aged Pupils	2,684,330.88			
7311 Pupil Transportation Subsidy	810,400.66			
7312 Nonpublic and Charter School Pupil Transportation Subsidy	523,646.00			
7320 Rental and Sinking Fund Payments / Building Reimbursement Subsidy	123,115.31			
7330 Health Services (Medical, Dental, Nurse, Act 25)	134,920.46			
7340 State Property Tax Reduction Allocation	2,103,839.31			
7361 School Safety and Security Grants	167,271.00			
7505 Ready to Learn Block Grant	192,476.00			
7506 PAsmart Grants	27,585.00			
7820 State Share of Retirement Contributions	9,758,243.68			
TOTAL Revenue from State Sources	\$22,138,615.39			

	Revenue Reported In Current Year			
<u>Revenue from Federal Sources</u>				
8514 NCLB, Title I - Improving the Academic Achievement of the Disadvantaged	223,004.66			
8515 NCLB, Title II - Preparing, Training and Recruiting High Quality Teachers and Principals	101,288.07			
8517 NCLB, Title IV - 21St Century Schools	29,566.00			
8810 School-Based Access Medicaid Reimbursement Program (SBAP) Reimbursements (Access)	453,313.25			
8820 Medical Assistance Reimbursement for Administrative Claiming (Quarterly) Program	6,777.08			
TOTAL Revenue from Federal Sources	\$813,949.06			
TOTAL FROM ALL SOURCES	\$126,179,900.52			\$100,835,594.01

LEA : 125234502 Haverford Township SD

Printed 12/30/2020 2:17:52 PM

	<u>General Fund (10)</u>	<u>Student Sponsored Activity Fund (21)</u>	<u>Public Purpose Trust (27)</u>	<u>Other Compt Approved (28)</u>	<u>Athletic / Activity (29)</u>	<u>Capital Reserve (690, 1850) (31)</u>
6000 Revenue from Local Sources						
6111 Current Real Estate Taxes	97,330,452.72					
6112 Interim Real Estate Taxes	385,062.40					
6113 Public Utility Realty Taxes	90,649.83					
6153 Current Act 511 Real Estate Transfer Taxes	1,656,148.46					
6411 Delinquent Real Estate Taxes	1,373,280.60					
6500 Earnings on Investments	845,451.46					
6700 Revenues from LEA Activities	65,124.25					
6832 Federal IDEA Revenue Received as Pass Through	917,388.00					
6910 Rentals	79,475.55					
6942 Summer School Tuition	13,364.25					
6991 Refunds of a Prior Year Expenditure	414,410.36					
6999 Other Revenues Not Specified Above	56,528.19					
6000 Total Revenue from Local Sources	\$103,227,336.07					
7000 Revenue from State Sources						
7111 Basic Education Funding-Formula	3,631,995.66					
7112 Basic Education Funding-Social Security	1,967,582.52					
7160 Tuition for Orphans Subsidy	13,208.91					
7271 Special Education funds for School-Aged Pupils	2,684,330.88					
7311 Pupil Transportation Subsidy	810,400.66					
7312 Nonpublic and Charter School Pupil Transportation Subsidy	523,646.00					
7320 Rental and Sinking Fund Payments / Building Reimbursement Subsidy	123,115.31					
7330 Health Services (Medical, Dental, Nurse, Act 25)	134,920.46					
7340 State Property Tax Reduction Allocation	2,103,839.31					
7361 School Safety and Security Grants	167,271.00					
7505 Ready to Learn Block Grant	192,476.00					
7506 PAsmart Grants	27,585.00					
7820 State Share of Retirement Contributions	9,758,243.68					
7000 Total Revenue from State Sources	\$22,138,615.39					
8000 Revenue from Federal Sources						
8514 NCLB, Title I - Improving the Academic Achievement of the Disadvantaged	223,004.66					
8515 NCLB, Title II - Preparing, Training and Recruiting High Quality Teachers and Principals	101,288.07					
8517 NCLB, Title IV - 21st Century Schools	29,566.00					
8810 School-Based Access Medicaid Reimbursement Program (SBAP) Reimbursements (Access)	453,313.25					

LEA : 125234502 Haverford Township SD

Printed 12/30/2020 2:17:52 PM

	Capital Reserve (1431) (32)	Other Capital Projects Fund (39)	Debt Service (40)	Permanent (90)	Total
6000 Revenue from Local Sources					
6111 Current Real Estate Taxes					97,330,452.72
6112 Interim Real Estate Taxes					385,062.40
6113 Public Utility Realty Taxes					90,649.83
6153 Current Act 511 Real Estate Transfer Taxes					1,656,148.46
6411 Delinquent Real Estate Taxes					1,373,280.60
6500 Earnings on Investments		237,935.00			1,083,386.46
6700 Revenues from LEA Activities					65,124.25
6832 Federal IDEA Revenue Received as Pass Through					917,388.00
6910 Rentals					79,475.55
6942 Summer School Tuition					13,364.25
6991 Refunds of a Prior Year Expenditure					414,410.36
6999 Other Revenues Not Specified Above					56,528.19
6000 Total Revenue from Local Sources		\$237,935.00			\$103,465,271.07
7000 Revenue from State Sources					
7111 Basic Education Funding-Formula					3,631,995.66
7112 Basic Education Funding-Social Security					1,967,582.52
7160 Tuition for Orphans Subsidy					13,208.91
7271 Special Education funds for School-Aged Pupils					2,684,330.88
7311 Pupil Transportation Subsidy					810,400.66
7312 Nonpublic and Charter School Pupil Transportation Subsidy					523,646.00
7320 Rental and Sinking Fund Payments / Building Reimbursement Subsidy					123,115.31
7330 Health Services (Medical, Dental, Nurse, Act 25)					134,920.46
7340 State Property Tax Reduction Allocation					2,103,839.31
7361 School Safety and Security Grants					167,271.00
7505 Ready to Learn Block Grant					192,476.00
7506 PAsmart Grants					27,585.00
7820 State Share of Retirement Contributions					9,758,243.68
7000 Total Revenue from State Sources					\$22,138,615.39
8000 Revenue from Federal Sources					
8514 NCLB, Title I - Improving the Academic Achievement of the Disadvantaged					223,004.66
8515 NCLB, Title II - Preparing, Training and Recruiting High Quality Teachers and Principals					101,288.07
8517 NCLB, Title IV - 21st Century Schools					29,566.00
8810 School-Based Access Medicaid Reimbursement Program (SBAP) Reimbursements (Access)					453,313.25

LEA : 125234502 Haverford Township SD

Printed 12/30/2020 2:17:52 PM

	<u>General Fund (10)</u>	<u>Student Sponsored Activity Fund (21)</u>	<u>Public Purpose Trust (27)</u>	<u>Other Compt Approved (28)</u>	<u>Athletic / Activity (29)</u>	<u>Capital Reserve (690, 1850) (31)</u>
8000 Revenue from Federal Sources						
8820 Medical Assistance Reimbursement for Administrative Claiming (Quarterly) Program	6,777.08					
8000 Total Revenue from Federal Sources	\$813,949.06					
9000 Other Financing Sources						
9110 Face Value of Bonds Issued						
9120 Proceeds from Refunding of Bonds						
9130 Bond Premiums						
9290 Other Extended-Term Financing Proceeds						
9310 General Fund Transfers						
9000 Total Other Financing Sources						
Total From All Sources	\$126,179,900.52					

LEA : 125234502 Haverford Township SD

Printed 12/30/2020 2:17:52 PM

	<u>Capital Reserve</u> <u>(1431) (32)</u>	<u>Other Capital</u> <u>Projects Fund (39)</u>	<u>Debt Service (40)</u>	<u>Permanent (90)</u>	<u>Total</u>
8000 Revenue from Federal Sources					
8820 Medical Assistance Reimbursement for Administrative Claiming (Quarterly) Program					6,777.08
8000 Total Revenue from Federal Sources					\$813,949.06
9000 Other Financing Sources					
9110 Face Value of Bonds Issued		34,995,000.00			34,995,000.00
9120 Proceeds from Refunding of Bonds		8,315,000.00			8,315,000.00
9130 Bond Premiums		2,937,944.40			2,937,944.40
9290 Other Extended-Term Financing Proceeds		673,522.25			673,522.25
9310 General Fund Transfers		1,272,008.00			1,272,008.00
9000 Total Other Financing Sources		\$48,193,474.65			\$48,193,474.65
Total From All Sources		\$48,431,409.65			\$174,611,310.17

LEA : 125234502 Haverford Township SD

Printed 12/30/2020 2:18:01 PM

	<u>General Fund (10)</u>	<u>Student Sponsored Activity Fund (21)</u>	<u>Public Purpose Trust (27)</u>	<u>Other Compt Approved (28)</u>	<u>Athletic / Activity (29)</u>	<u>Capital Reserve (690.1850) (31)</u>
Revenue from Local Sources	103,227,336.07					
Revenue from State Sources	22,138,615.39					
Revenue from Federal Sources	813,949.06					
Other Financing Sources						
Total From All Sources	\$126,179,900.52					

LEA : 125234502 Haverford Township SD

Printed 12/30/2020 2:18:01 PM

	<u>Capital Reserve (1431)</u> <u>(32)</u>	<u>Other Capital Projects</u> <u>Fund (39)</u>	<u>Debt Service (40)</u>	<u>Permanent (90)</u>	<u>Total</u>
Revenue from Local Sources		237,935.00			103,465,271.07
Revenue from State Sources					22,138,615.39
Revenue from Federal Sources					813,949.06
Other Financing Sources		48,193,474.65			48,193,474.65
Total From All Sources		\$48,431,409.65			\$174,611,310.17

LEA : 125234502 Haverford Township SD

Printed 12/30/2020 2:18:06 PM

General Fund (10)

1000 Instruction		Total
100 <u>Personnel Services – Salaries</u>		
100 Personnel Services – Salaries		39,254,184.23
Total Personnel Services – Salaries		\$39,254,184.23
200 <u>Personnel Services – Employee Benefits</u>		
210 Group Insurance – Contracted Provider		9,122,693.02
220 Social Security Contributions		2,933,612.29
230 PSERS Retirement Contributions		13,457,160.38
250 Unemployment Compensation		5,986.95
260 Workers' Compensation		399,455.00
270 Group Insurance – Self-Insurance		10,371.80
291 Other Retirement Plans		79,585.00
299 All Other Employee Benefits		27,127.67
Total Personnel Services – Employee Benefits		\$26,035,992.11
300 <u>Purchased Professional and Technical Services</u>		
322 Professional Educational Services – Ius		1,232,723.64
329 Professional Educational Services – Other		84,478.94
330 Other Professional Services		736,564.02
390 Other Purchased Professional and Technical Services		7,815.00
Total Purchased Professional and Technical Services		\$2,061,581.60
400 <u>Purchased Property Services</u>		
410 Cleaning Services		5,826.00
430 Repairs and Maintenance Services		3,907.02
440 Rentals		451,316.13
Total Purchased Property Services		\$461,049.15
500 <u>Other Purchased Services</u>		
530 Communications		214.90
561 Tuition To Other School Districts Within the State		12,002.02
562 Tuition To Pennsylvania Charter Schools		340,250.88
563 Tuition To Nonpublic Schools		1,573,915.13
564 Tuition To Career and Technology Centers		680,991.65
566 Tuition To Institutions of Higher Education and Technical Institutes		1,323,446.00
567 Tuition To Approved Private Schools (APS) and PA Chartered Schools for the Deaf and Blind		2,787,499.91
580 Travel		2,113.32
Total Other Purchased Services		\$6,720,433.81
600 <u>Supplies</u>		
610 General Supplies		534,431.01
640 Books and Periodicals		471,363.17
650 Supplies & Fees – Technology Related		195,877.57
Total Supplies		\$1,201,671.75
700 <u>Property</u>		
752 Capital Equipment – Original and Additional		46,754.85
758 Capitalized Technology Software - Original		45,510.42
762 Capitalized Equipment - Replacement		10,917.36

LEA : 125234502 Haverford Township SD

Printed 12/30/2020 2:18:06 PM

General Fund (10)

1000 Instruction		<u>Total</u>
Total Property		\$103,182.63
800 <u>Other Objects</u>		
810 Dues and Fees		9,208.75
Total Other Objects		\$9,208.75
Total 1000 Instruction		\$75,847,304.03

LEA : 125234502 Haverford Township SD

Printed 12/30/2020 2:18:06 PM

General Fund (10)

1100 Regular Programs – Elementary / Secondary	Elementary	Secondary	Federal	Total
100 <u>Personnel Services – Salaries</u>				
100 Personnel Services – Salaries	14,715,099.16	14,009,762.97	150,395.79	28,875,257.92
Total Personnel Services – Salaries	\$14,715,099.16	\$14,009,762.97	\$150,395.79	\$28,875,257.92
200 <u>Personnel Services – Employee Benefits</u>				
210 Group Insurance – Contracted Provider	3,135,605.45	2,878,958.09	38,532.81	6,053,096.35
220 Social Security Contributions	1,102,568.76	1,050,018.26	11,091.77	2,163,678.79
230 PSERS Retirement Contributions	5,014,788.50	4,855,572.13	51,570.92	9,921,931.55
250 Unemployment Compensation	3,271.04	2,715.91		5,986.95
260 Workers' Compensation	199,727.50	199,727.50		399,455.00
270 Group Insurance – Self-Insurance	3,456.96	6,914.84		10,371.80
291 Other Retirement Plans	41,585.00	16,700.00		58,285.00
299 All Other Employee Benefits	17,400.00	9,727.67		27,127.67
Total Personnel Services – Employee Benefits	\$9,518,403.21	\$9,020,334.40	\$101,195.50	\$18,639,933.11
300 <u>Purchased Professional and Technical Services</u>				
329 Professional Educational Services – Other	4,647.50	7,942.50		12,590.00
330 Other Professional Services	391.58			391.58
390 Other Purchased Professional and Technical Services	7,815.00			7,815.00
Total Purchased Professional and Technical Services	\$12,854.08	\$7,942.50		\$20,796.58
400 <u>Purchased Property Services</u>				
410 Cleaning Services		5,826.00		5,826.00
430 Repairs and Maintenance Services	727.00	3,180.02		3,907.02
440 Rentals	114,864.50	336,451.63		451,316.13
Total Purchased Property Services	\$115,591.50	\$345,457.65		\$461,049.15
500 <u>Other Purchased Services</u>				
530 Communications		163.27		163.27
562 Tuition To Pennsylvania Charter Schools	50,087.77	176,480.36		226,568.13
580 Travel	561.26	1,552.06		2,113.32
Total Other Purchased Services	\$50,649.03	\$178,195.69		\$228,844.72
600 <u>Supplies</u>				
610 General Supplies	234,507.77	241,120.03	470.22	476,098.02
640 Books and Periodicals	245,539.16	187,599.54		433,138.70
650 Supplies & Fees – Technology Related	78,639.92	71,395.66		150,035.58
Total Supplies	\$558,686.85	\$500,115.23	\$470.22	\$1,059,272.30
700 <u>Property</u>				
752 Capital Equipment – Original and Additional	27,226.18	18,818.67		46,044.85
758 Capitalized Technology Software - Original	25,134.72	10,992.72		36,127.44
762 Capitalized Equipment - Replacement	2,366.67	8,550.69		10,917.36
Total Property	\$54,727.57	\$38,362.08		\$93,089.65
800 <u>Other Objects</u>				
810 Dues and Fees		9,208.75		9,208.75
Total Other Objects		\$9,208.75		\$9,208.75
Total 1100 Regular Programs – Elementary / Secondary	\$25,026,011.40	\$24,109,379.27	\$252,061.51	\$49,387,452.18

LEA : 125234502 Haverford Township SD

Printed 12/30/2020 2:18:06 PM

General Fund (10)

1110 Regular Programs

	Elementary	Secondary	Federal	Total
100 <u>Personnel Services – Salaries</u>				
100 Personnel Services – Salaries	14,715,099.16	14,009,762.97		28,724,862.13
Total Personnel Services – Salaries	\$14,715,099.16	\$14,009,762.97		\$28,724,862.13
200 <u>Personnel Services – Employee Benefits</u>				
210 Group Insurance – Contracted Provider	3,135,605.45	2,878,958.09		6,014,563.54
220 Social Security Contributions	1,102,568.76	1,050,018.26		2,152,587.02
230 PSERS Retirement Contributions	5,014,788.50	4,855,572.13		9,870,360.63
250 Unemployment Compensation	3,271.04	2,715.91		5,986.95
260 Workers' Compensation	199,727.50	199,727.50		399,455.00
270 Group Insurance – Self-Insurance	3,456.96	6,914.84		10,371.80
291 Other Retirement Plans	41,585.00	16,700.00		58,285.00
299 All Other Employee Benefits	17,400.00	9,727.67		27,127.67
Total Personnel Services – Employee Benefits	\$9,518,403.21	\$9,020,334.40		\$18,538,737.61
300 <u>Purchased Professional and Technical Services</u>				
329 Professional Educational Services – Other	4,647.50	7,942.50		12,590.00
330 Other Professional Services	391.58			391.58
390 Other Purchased Professional and Technical Services	7,815.00			7,815.00
Total Purchased Professional and Technical Services	\$12,854.08	\$7,942.50		\$20,796.58
400 <u>Purchased Property Services</u>				
410 Cleaning Services		5,826.00		5,826.00
430 Repairs and Maintenance Services	727.00	3,180.02		3,907.02
440 Rentals	114,864.50	336,451.63		451,316.13
Total Purchased Property Services	\$115,591.50	\$345,457.65		\$461,049.15
500 <u>Other Purchased Services</u>				
530 Communications		163.27		163.27
562 Tuition To Pennsylvania Charter Schools	50,087.77	176,480.36		226,568.13
580 Travel	561.26	1,552.06		2,113.32
Total Other Purchased Services	\$50,649.03	\$178,195.69		\$228,844.72
600 <u>Supplies</u>				
610 General Supplies	234,507.77	241,120.03		475,627.80
640 Books and Periodicals	245,539.16	187,599.54		433,138.70
650 Supplies & Fees – Technology Related	78,639.92	71,395.66		150,035.58
Total Supplies	\$558,686.85	\$500,115.23		\$1,058,802.08
700 <u>Property</u>				
752 Capital Equipment – Original and Additional	27,226.18	18,818.67		46,044.85
758 Capitalized Technology Software - Original	25,134.72	10,992.72		36,127.44
762 Capitalized Equipment - Replacement	2,366.67	8,550.69		10,917.36
Total Property	\$54,727.57	\$38,362.08		\$93,089.65
800 <u>Other Objects</u>				
810 Dues and Fees		9,208.75		9,208.75
Total Other Objects		\$9,208.75		\$9,208.75
Total 1110 Regular Programs	\$25,026,011.40	\$24,109,379.27		\$49,135,390.67

LEA : 125234502 Haverford Township SD

Printed 12/30/2020 2:18:06 PM

General Fund (10)				
1190 Federally-Funded Regular Programs	<u>Elementary</u>	<u>Secondary</u>	<u>Federal</u>	<u>Total</u>
100 <u>Personnel Services – Salaries</u>				
100 Personnel Services – Salaries			150,395.79	150,395.79
Total Personnel Services – Salaries			\$150,395.79	\$150,395.79
200 <u>Personnel Services – Employee Benefits</u>				
210 Group Insurance – Contracted Provider			38,532.81	38,532.81
220 Social Security Contributions			11,091.77	11,091.77
230 PSERS Retirement Contributions			51,570.92	51,570.92
Total Personnel Services – Employee Benefits			\$101,195.50	\$101,195.50
600 <u>Supplies</u>				
610 General Supplies			470.22	470.22
Total Supplies			\$470.22	\$470.22
Total 1190 Federally-Funded Regular Programs			\$252,061.51	\$252,061.51

LEA : 125234502 Haverford Township SD

Printed 12/30/2020 2:18:06 PM

General Fund (10)				
1200 Special Programs – Elementary / Secondary	<u>Elementary</u>	<u>Secondary</u>	<u>Federal</u>	<u>Total</u>
100 <u>Personnel Services – Salaries</u>				
100 Personnel Services – Salaries	5,915,602.67	4,180,542.07		10,096,144.74
Total Personnel Services – Salaries	\$5,915,602.67	\$4,180,542.07		\$10,096,144.74
200 <u>Personnel Services – Employee Benefits</u>				
210 Group Insurance – Contracted Provider	1,854,184.53	1,163,655.40		3,017,839.93
220 Social Security Contributions	438,996.80	309,418.50		748,415.30
230 PSERS Retirement Contributions	2,017,172.42	1,423,324.90		3,440,497.32
291 Other Retirement Plans	18,520.00	2,780.00		21,300.00
Total Personnel Services – Employee Benefits	\$4,328,873.75	\$2,899,178.80		\$7,228,052.55
300 <u>Purchased Professional and Technical Services</u>				
322 Professional Educational Services – Ius	153,003.32	153,003.32	913,209.00	1,219,215.64
330 Other Professional Services	180,264.17	109,364.38	446,543.89	736,172.44
Total Purchased Professional and Technical Services	\$333,267.49	\$262,367.70	\$1,359,752.89	\$1,955,388.08
500 <u>Other Purchased Services</u>				
530 Communications	25.82	25.81		51.63
561 Tuition To Other School Districts Within the State	5,409.37			5,409.37
562 Tuition To Pennsylvania Charter Schools	6,336.49	107,346.26		113,682.75
563 Tuition To Nonpublic Schools	383,685.81	1,190,229.32		1,573,915.13
567 Tuition To Approved Private Schools (APS) and PA Chartered Schools for the Deaf and Blind	1,360,012.47	1,427,487.44		2,787,499.91
Total Other Purchased Services	\$1,755,469.96	\$2,725,088.83		\$4,480,558.79
600 <u>Supplies</u>				
610 General Supplies	26,463.07	28,041.92	3,828.00	58,332.99
640 Books and Periodicals	17,347.08	20,877.39		38,224.47
650 Supplies & Fees – Technology Related	14,801.00	14,801.00		29,602.00
Total Supplies	\$58,611.15	\$63,720.31	\$3,828.00	\$126,159.46
700 <u>Property</u>				
752 Capital Equipment – Original and Additional		710.00		710.00
758 Capitalized Technology Software - Original	3,220.81	3,220.81	2,941.36	9,382.98
Total Property	\$3,220.81	\$3,930.81	\$2,941.36	\$10,092.98
Total 1200 Special Programs – Elementary / Secondary	\$12,395,045.83	\$10,134,828.52	\$1,366,522.25	\$23,896,396.60

LEA : 125234502 Haverford Township SD

Printed 12/30/2020 2:18:06 PM

General Fund (10)

1210 Life Skills Support

	<u>Elementary</u>	<u>Secondary</u>	<u>Federal</u>	<u>Total</u>
600 <u>Supplies</u>				
610 General Supplies		1,500.00		1,500.00
Total Supplies		\$1,500.00		\$1,500.00
Total 1210 Life Skills Support		\$1,500.00		\$1,500.00

LEA : 125234502 Haverford Township SD

Printed 12/30/2020 2:18:06 PM

General Fund (10)

1220 Sensory Support

	<u>Elementary</u>	<u>Secondary</u>	<u>Federal</u>	<u>Total</u>
100 <u>Personnel Services – Salaries</u>				
100 Personnel Services – Salaries	344,948.25	344,948.25		689,896.50
Total Personnel Services – Salaries	\$344,948.25	\$344,948.25		\$689,896.50
200 <u>Personnel Services – Employee Benefits</u>				
210 Group Insurance – Contracted Provider	80,304.47	80,304.47		160,608.94
220 Social Security Contributions	24,388.83	24,388.82		48,777.65
230 PSERS Retirement Contributions	118,282.77	118,282.76		236,565.53
Total Personnel Services – Employee Benefits	\$222,976.07	\$222,976.05		\$445,952.12
Total 1220 Sensory Support	\$567,924.32	\$567,924.30		\$1,135,848.62

LEA : 125234502 Haverford Township SD

Printed 12/30/2020 2:18:06 PM

General Fund (10)

1230 Emotional Support

	<u>Elementary</u>	<u>Secondary</u>	<u>Federal</u>	<u>Total</u>
600 <u>Supplies</u>				
610 General Supplies	1,570.81	4,344.15		5,914.96
640 Books and Periodicals		3,530.31		3,530.31
Total Supplies	\$1,570.81	\$7,874.46		\$9,445.27
700 <u>Property</u>				
752 Capital Equipment – Original and Additional		710.00		710.00
Total Property		\$710.00		\$710.00
Total 1230 Emotional Support	\$1,570.81	\$8,584.46		\$10,155.27

LEA : 125234502 Haverford Township SD

Printed 12/30/2020 2:18:06 PM

General Fund (10)

1240 Academic Support

	<u>Elementary</u>	<u>Secondary</u>	<u>Federal</u>	<u>Total</u>
100 <u>Personnel Services – Salaries</u>				
100 Personnel Services – Salaries	5,346,559.80	3,634,143.75		8,980,703.55
Total Personnel Services – Salaries	\$5,346,559.80	\$3,634,143.75		\$8,980,703.55
200 <u>Personnel Services – Employee Benefits</u>				
210 Group Insurance – Contracted Provider	1,755,758.13	1,080,870.88		2,836,629.01
220 Social Security Contributions	396,437.08	269,685.38		666,122.46
230 PSERS Retirement Contributions	1,829,739.53	1,243,696.21		3,073,435.74
291 Other Retirement Plans	18,520.00	2,780.00		21,300.00
Total Personnel Services – Employee Benefits	\$4,000,454.74	\$2,597,032.47		\$6,597,487.21
600 <u>Supplies</u>				
610 General Supplies	4,929.79	4,929.80		9,859.59
640 Books and Periodicals	873.25	873.25		1,746.50
Total Supplies	\$5,803.04	\$5,803.05		\$11,606.09
Total 1240 Academic Support	\$9,352,817.58	\$6,236,979.27		\$15,589,796.85

LEA : 125234502 Haverford Township SD

Printed 12/30/2020 2:18:06 PM

General Fund (10)

1241 Learning Support – Public	<u>Elementary</u>	<u>Secondary</u>	<u>Federal</u>	<u>Total</u>
100 <u>Personnel Services – Salaries</u>				
100 Personnel Services – Salaries	4,817,844.36	3,475,890.11		8,293,734.47
Total Personnel Services – Salaries	\$4,817,844.36	\$3,475,890.11		\$8,293,734.47
200 <u>Personnel Services – Employee Benefits</u>				
210 Group Insurance – Contracted Provider	1,636,159.10	1,064,223.91		2,700,383.01
220 Social Security Contributions	357,721.58	257,753.75		615,475.33
230 PSERS Retirement Contributions	1,648,442.93	1,189,430.95		2,837,873.88
291 Other Retirement Plans	18,520.00	2,780.00		21,300.00
Total Personnel Services – Employee Benefits	\$3,660,843.61	\$2,514,188.61		\$6,175,032.22
Total 1241 Learning Support – Public	\$8,478,687.97	\$5,990,078.72		\$14,468,766.69

LEA : 125234502 Haverford Township SD

Printed 12/30/2020 2:18:06 PM

General Fund (10)				
1243 Gifted Support	<u>Elementary</u>	<u>Secondary</u>	<u>Federal</u>	<u>Total</u>
100 <u>Personnel Services – Salaries</u>				
100 Personnel Services – Salaries	528,715.44	158,253.64		686,969.08
Total Personnel Services – Salaries	\$528,715.44	\$158,253.64		\$686,969.08
200 <u>Personnel Services – Employee Benefits</u>				
210 Group Insurance – Contracted Provider	119,599.03	16,646.97		136,246.00
220 Social Security Contributions	38,715.50	11,931.63		50,647.13
230 PSERS Retirement Contributions	181,296.60	54,265.26		235,561.86
Total Personnel Services – Employee Benefits	\$339,611.13	\$82,843.86		\$422,454.99
600 <u>Supplies</u>				
610 General Supplies	4,929.79	4,929.80		9,859.59
640 Books and Periodicals	873.25	873.25		1,746.50
Total Supplies	\$5,803.04	\$5,803.05		\$11,606.09
Total 1243 Gifted Support	\$874,129.61	\$246,900.55		\$1,121,030.16

LEA : 125234502 Haverford Township SD

Printed 12/30/2020 2:18:06 PM

General Fund (10)				
1280 Early Intervention Support	<u>Elementary</u>	<u>Secondary</u>	<u>Federal</u>	<u>Total</u>
300 <u>Purchased Professional and Technical Services</u>				
330 Other Professional Services	70,899.78			70,899.78
Total Purchased Professional and Technical Services	\$70,899.78			\$70,899.78
Total 1280 Early Intervention Support	\$70,899.78			\$70,899.78

LEA : 125234502 Haverford Township SD

Printed 12/30/2020 2:18:06 PM

General Fund (10)				
1290 Special Programs - Other Support	Elementary	Secondary	Federal	Total
100 Personnel Services – Salaries				
100 Personnel Services – Salaries	224,094.62	201,450.07		425,544.69
Total Personnel Services – Salaries	\$224,094.62	\$201,450.07		\$425,544.69
200 Personnel Services – Employee Benefits				
210 Group Insurance – Contracted Provider	18,121.93	2,480.05		20,601.98
220 Social Security Contributions	18,170.89	15,344.30		33,515.19
230 PSERS Retirement Contributions	69,150.12	61,345.93		130,496.05
Total Personnel Services – Employee Benefits	\$105,442.94	\$79,170.28		\$184,613.22
300 Purchased Professional and Technical Services				
322 Professional Educational Services – Ius	153,003.32	153,003.32	913,209.00	1,219,215.64
330 Other Professional Services	109,364.39	109,364.38	446,543.89	665,272.66
Total Purchased Professional and Technical Services	\$262,367.71	\$262,367.70	\$1,359,752.89	\$1,884,488.30
500 Other Purchased Services				
530 Communications	25.82	25.81		51.63
561 Tuition To Other School Districts Within the State	5,409.37			5,409.37
562 Tuition To Pennsylvania Charter Schools	6,336.49	107,346.26		113,682.75
563 Tuition To Nonpublic Schools	383,685.81	1,190,229.32		1,573,915.13
567 Tuition To Approved Private Schools (APS) and PA Chartered Schools for the Deaf and Blind	1,360,012.47	1,427,487.44		2,787,499.91
Total Other Purchased Services	\$1,755,469.96	\$2,725,088.83		\$4,480,558.79
600 Supplies				
610 General Supplies	19,962.47	17,267.97	3,828.00	41,058.44
640 Books and Periodicals	16,473.83	16,473.83		32,947.66
650 Supplies & Fees – Technology Related	14,801.00	14,801.00		29,602.00
Total Supplies	\$51,237.30	\$48,542.80	\$3,828.00	\$103,608.10
700 Property				
758 Capitalized Technology Software - Original	3,220.81	3,220.81	2,941.36	9,382.98
Total Property	\$3,220.81	\$3,220.81	\$2,941.36	\$9,382.98
Total 1290 Special Programs - Other Support	\$2,401,833.34	\$3,319,840.49	\$1,366,522.25	\$7,088,196.08

LEA : 125234502 Haverford Township SD

Printed 12/30/2020 2:18:06 PM

General Fund (10)

1300 Vocational Education

	<u>Elementary</u>	<u>Secondary</u>	<u>Federal</u>	<u>Total</u>
500 <u>Other Purchased Services</u>				
564 Tuition To Career and Technology Centers		680,991.65		680,991.65
Total Other Purchased Services		\$680,991.65		\$680,991.65
Total 1300 Vocational Education		\$680,991.65		\$680,991.65

LEA : 125234502 Haverford Township SD

Printed 12/30/2020 2:18:06 PM

General Fund (10)				
1400 Other Instructional Programs – Elementary / Secondary	<u>Elementary</u>	<u>Secondary</u>	<u>Federal</u>	<u>Total</u>
100 <u>Personnel Services – Salaries</u>				
100 Personnel Services – Salaries	65,472.35	217,309.22		282,781.57
Total Personnel Services – Salaries	\$65,472.35	\$217,309.22		\$282,781.57
200 <u>Personnel Services – Employee Benefits</u>				
210 Group Insurance – Contracted Provider	10,061.48	41,695.26		51,756.74
220 Social Security Contributions	4,893.60	16,624.60		21,518.20
230 PSERS Retirement Contributions	21,594.82	73,136.69		94,731.51
Total Personnel Services – Employee Benefits	\$36,549.90	\$131,456.55		\$168,006.45
300 <u>Purchased Professional and Technical Services</u>				
329 Professional Educational Services – Other	35,944.47	35,944.47		71,888.94
Total Purchased Professional and Technical Services	\$35,944.47	\$35,944.47		\$71,888.94
500 <u>Other Purchased Services</u>				
561 Tuition To Other School Districts Within the State	3,296.32	3,296.33		6,592.65
Total Other Purchased Services	\$3,296.32	\$3,296.33		\$6,592.65
600 <u>Supplies</u>				
650 Supplies & Fees – Technology Related		16,239.99		16,239.99
Total Supplies		\$16,239.99		\$16,239.99
Total 1400 Other Instructional Programs – Elementary / Secondary	\$141,263.04	\$404,246.56		\$545,509.60

LEA : 125234502 Haverford Township SD

Printed 12/30/2020 2:18:06 PM

General Fund (10)				
1420 Summer School	<u>Elementary</u>	<u>Secondary</u>	<u>Federal</u>	<u>Total</u>
100 <u>Personnel Services – Salaries</u>				
100 Personnel Services – Salaries	15,883.54	5,421.45		21,304.99
Total Personnel Services – Salaries	\$15,883.54	\$5,421.45		\$21,304.99
200 <u>Personnel Services – Employee Benefits</u>				
220 Social Security Contributions	1,215.10	414.81		1,629.91
230 PSERS Retirement Contributions	5,446.51	1,859.04		7,305.55
Total Personnel Services – Employee Benefits	\$6,661.61	\$2,273.85		\$8,935.46
Total 1420 Summer School	\$22,545.15	\$7,695.30		\$30,240.45

LEA : 125234502 Haverford Township SD

Printed 12/30/2020 2:18:06 PM

General Fund (10)				
1430 Homebound Instruction	<u>Elementary</u>	<u>Secondary</u>	<u>Federal</u>	<u>Total</u>
100 <u>Personnel Services – Salaries</u>				
100 Personnel Services – Salaries	5,263.50	5,263.50		10,527.00
Total Personnel Services – Salaries	\$5,263.50	\$5,263.50		\$10,527.00
200 <u>Personnel Services – Employee Benefits</u>				
220 Social Security Contributions	400.91	400.90		801.81
230 PSERS Retirement Contributions	949.12	949.12		1,898.24
Total Personnel Services – Employee Benefits	\$1,350.03	\$1,350.02		\$2,700.05
300 <u>Purchased Professional and Technical Services</u>				
329 Professional Educational Services – Other	35,944.47	35,944.47		71,888.94
Total Purchased Professional and Technical Services	\$35,944.47	\$35,944.47		\$71,888.94
Total 1430 Homebound Instruction	\$42,558.00	\$42,557.99		\$85,115.99

LEA : 125234502 Haverford Township SD

Printed 12/30/2020 2:18:06 PM

General Fund (10)				
1440 Alternative Regular Education Programs	<u>Elementary</u>	<u>Secondary</u>	<u>Federal</u>	<u>Total</u>
100 <u>Personnel Services – Salaries</u>				
100 Personnel Services – Salaries		76,145.11		76,145.11
Total Personnel Services – Salaries		\$76,145.11		\$76,145.11
200 <u>Personnel Services – Employee Benefits</u>				
210 Group Insurance – Contracted Provider		9,899.56		9,899.56
220 Social Security Contributions		6,174.21		6,174.21
230 PSERS Retirement Contributions		25,587.26		25,587.26
Total Personnel Services – Employee Benefits		\$41,661.03		\$41,661.03
500 <u>Other Purchased Services</u>				
561 Tuition To Other School Districts Within the State	3,296.32	3,296.33		6,592.65
Total Other Purchased Services	\$3,296.32	\$3,296.33		\$6,592.65
600 <u>Supplies</u>				
650 Supplies & Fees – Technology Related		16,239.99		16,239.99
Total Supplies		\$16,239.99		\$16,239.99
Total 1440 Alternative Regular Education Programs	\$3,296.32	\$137,342.46		\$140,638.78

LEA : 125234502 Haverford Township SD

Printed 12/30/2020 2:18:06 PM

General Fund (10)

1441 Adjudicated / Court-Placed Programs	<u>Elementary</u>	<u>Secondary</u>	<u>Federal</u>	<u>Total</u>
500 <u>Other Purchased Services</u>				
561 Tuition To Other School Districts Within the State	3,296.32	3,296.33		6,592.65
Total Other Purchased Services	\$3,296.32	\$3,296.33		\$6,592.65
Total 1441 Adjudicated / Court-Placed Programs	\$3,296.32	\$3,296.33		\$6,592.65

LEA : 125234502 Haverford Township SD

Printed 12/30/2020 2:18:06 PM

General Fund (10)					
1442 Alternative Education Programs		<u>Elementary</u>	<u>Secondary</u>	<u>Federal</u>	<u>Total</u>
100 <u>Personnel Services – Salaries</u>					
100 Personnel Services – Salaries			76,145.11		76,145.11
Total Personnel Services – Salaries			\$76,145.11		\$76,145.11
200 <u>Personnel Services – Employee Benefits</u>					
210 Group Insurance – Contracted Provider			9,899.56		9,899.56
220 Social Security Contributions			6,174.21		6,174.21
230 PSERS Retirement Contributions			25,587.26		25,587.26
Total Personnel Services – Employee Benefits			\$41,661.03		\$41,661.03
600 <u>Supplies</u>					
650 Supplies & Fees – Technology Related			16,239.99		16,239.99
Total Supplies			\$16,239.99		\$16,239.99
Total 1442 Alternative Education Programs			\$134,046.13		\$134,046.13

LEA : 125234502 Haverford Township SD

Printed 12/30/2020 2:18:06 PM

General Fund (10)

1450 Instructional Programs Outside the Established School Day	<u>Elementary</u>	<u>Secondary</u>	<u>Federal</u>	<u>Total</u>
100 <u>Personnel Services – Salaries</u>				
100 Personnel Services – Salaries	881.40	2,376.07		3,257.47
Total Personnel Services – Salaries	\$881.40	\$2,376.07		\$3,257.47
200 <u>Personnel Services – Employee Benefits</u>				
210 Group Insurance – Contracted Provider		6.77		6.77
220 Social Security Contributions	66.00	171.29		237.29
230 PSERS Retirement Contributions	302.24	814.76		1,117.00
Total Personnel Services – Employee Benefits	\$368.24	\$992.82		\$1,361.06
Total 1450 Instructional Programs Outside the Established School Day	\$1,249.64	\$3,368.89		\$4,618.53

LEA : 125234502 Haverford Township SD

Printed 12/30/2020 2:18:06 PM

General Fund (10)

1490 Additional Other Instructional Programs	<u>Elementary</u>	<u>Secondary</u>	<u>Federal</u>	<u>Total</u>
100 <u>Personnel Services – Salaries</u>				
100 Personnel Services – Salaries	43,443.91	128,103.09		171,547.00
Total Personnel Services – Salaries	\$43,443.91	\$128,103.09		\$171,547.00
200 <u>Personnel Services – Employee Benefits</u>				
210 Group Insurance – Contracted Provider	10,061.48	31,788.93		41,850.41
220 Social Security Contributions	3,211.59	9,463.39		12,674.98
230 PSERS Retirement Contributions	14,896.95	43,926.51		58,823.46
Total Personnel Services – Employee Benefits	\$28,170.02	\$85,178.83		\$113,348.85
Total 1490 Additional Other Instructional Programs	\$71,613.93	\$213,281.92		\$284,895.85

LEA : 125234502 Haverford Township SD

Printed 12/30/2020 2:18:06 PM

General Fund (10)				
1500 Nonpublic School Programs	<u>Elementary</u>	<u>Secondary</u>	<u>Federal</u>	<u>Total</u>
300 <u>Purchased Professional and Technical Services</u>				
322 Professional Educational Services – lus			13,508.00	13,508.00
Total Purchased Professional and Technical Services			\$13,508.00	\$13,508.00
Total 1500 Nonpublic School Programs			\$13,508.00	\$13,508.00

LEA : 125234502 Haverford Township SD

Printed 12/30/2020 2:18:06 PM

General Fund (10)

1600 Adult Education Programs

Elementary

Secondary

Federal

Total

500 Other Purchased Services

566 Tuition To Institutions of Higher Education and Technical Institutes

1,323,446.00

Total Other Purchased Services **\$1,323,446.00**

Total 1600 Adult Education Programs **\$1,323,446.00**

LEA : 125234502 Haverford Township SD

Printed 12/30/2020 2:18:15 PM

General Fund (10)

2000 Support Services

Total

100	<u>Personnel Services – Salaries</u>	
100	Personnel Services – Salaries	17,152,981.91
Total Personnel Services – Salaries		\$17,152,981.91
200	<u>Personnel Services – Employee Benefits</u>	
210	Group Insurance – Contracted Provider	3,637,081.99
220	Social Security Contributions	1,270,444.55
230	PSERS Retirement Contributions	5,868,207.12
240	Tuition Reimbursement	204,868.14
250	Unemployment Compensation	420.00
291	Other Retirement Plans	147,868.57
299	All Other Employee Benefits	18,071.00
Total Personnel Services – Employee Benefits		\$11,146,961.37
300	<u>Purchased Professional and Technical Services</u>	
322	Professional Educational Services – Ius	10,884.00
329	Professional Educational Services – Other	143,622.92
330	Other Professional Services	866,753.90
340	Technical Services	5,337.37
Total Purchased Professional and Technical Services		\$1,026,598.19
400	<u>Purchased Property Services</u>	
410	Cleaning Services	45,893.80
420	Utility Services	904,770.60
430	Repairs and Maintenance Services	1,397,730.81
440	Rentals	688,560.52
Total Purchased Property Services		\$3,036,955.73
500	<u>Other Purchased Services</u>	
513	Contracted Carriers	6,544.00
516	Student Transportation Services From the IU	46,171.04
519	Student Transportation Services From Other Sources	2,426.00
520	Insurance – General	103,827.00
522	Automotive Liability Insurance	97,201.00
523	General Property and Liability Insurance	269,992.99
529	Other Insurance	4,702.50
530	Communications	204,993.21
549	Other Advertising/Public Relations	3,542.96
550	Printing and Binding	8,104.63
580	Travel	23,941.37
595	IU Payments By Withholding	109,650.09
599	Other Miscellaneous Purchased Services	1,127.38
Total Other Purchased Services		\$882,224.17
600	<u>Supplies</u>	
610	General Supplies	719,585.14
620	Energy	440,662.51
630	Food	19,131.28
640	Books and Periodicals	45,468.22

LEA : 125234502 Haverford Township SD

Printed 12/30/2020 2:18:15 PM

General Fund (10)	
2000 Support Services	<u>Total</u>
600 <u>Supplies</u>	
650 Supplies & Fees – Technology Related	105,821.39
Total Supplies	\$1,330,668.54
700 <u>Property</u>	
752 Capital Equipment – Original and Additional	245,610.73
758 Capitalized Technology Software - Original	23,476.00
762 Capitalized Equipment - Replacement	119,621.80
Total Property	\$388,708.53
800 <u>Other Objects</u>	
810 Dues and Fees	246,638.64
Total Other Objects	\$246,638.64
Total 2000 Support Services	\$35,211,737.08

LEA : 125234502 Haverford Township SD

Printed 12/30/2020 2:18:15 PM

General Fund (10)

2100 Support Services – Students	Elementary	Secondary	Federal	Total
100 <u>Personnel Services – Salaries</u>				
100 Personnel Services – Salaries	1,613,000.29	1,636,033.43		3,480,550.71
Total Personnel Services – Salaries	\$1,613,000.29	\$1,636,033.43		\$3,480,550.71
200 <u>Personnel Services – Employee Benefits</u>				
210 Group Insurance – Contracted Provider	344,829.47	389,265.26		785,160.81
220 Social Security Contributions	120,309.37	121,463.92		258,550.38
230 PSERS Retirement Contributions	553,423.84	561,135.01		1,193,946.07
291 Other Retirement Plans	749.91	749.91		1,499.82
299 All Other Employee Benefits	3,163.00	3,163.00		6,326.00
Total Personnel Services – Employee Benefits	\$1,022,475.59	\$1,075,777.10		\$2,245,483.08
300 <u>Purchased Professional and Technical Services</u>				
330 Other Professional Services	39,222.78	39,872.77		79,095.55
Total Purchased Professional and Technical Services	\$39,222.78	\$39,872.77		\$79,095.55
500 <u>Other Purchased Services</u>				
530 Communications	54.09	54.08		108.17
580 Travel	1,029.21	1,029.20		2,305.78
Total Other Purchased Services	\$1,083.30	\$1,083.28		\$2,413.95
600 <u>Supplies</u>				
610 General Supplies	3,747.51	3,747.51		7,495.02
640 Books and Periodicals	520.48			520.48
650 Supplies & Fees – Technology Related	2,514.79	2,514.79		5,029.58
Total Supplies	\$6,782.78	\$6,262.30		\$13,045.08
800 <u>Other Objects</u>				
810 Dues and Fees		748.53		748.53
Total Other Objects		\$748.53		\$748.53
Total 2100 Support Services – Students	\$2,682,564.74	\$2,759,777.41		\$5,821,336.90

LEA : 125234502 Haverford Township SD

Printed 12/30/2020 2:18:15 PM

General Fund (10)				
2110 Supervision of Student Services	<u>Elementary</u>	<u>Secondary</u>	<u>Federal</u>	<u>Total</u>
100 <u>Personnel Services – Salaries</u>				
100 Personnel Services – Salaries	359,702.46	375,829.62		735,532.08
Total Personnel Services – Salaries	\$359,702.46	\$375,829.62		\$735,532.08
200 <u>Personnel Services – Employee Benefits</u>				
210 Group Insurance – Contracted Provider	82,916.85	83,978.61		166,895.46
220 Social Security Contributions	26,879.43	28,326.51		55,205.94
230 PSERS Retirement Contributions	123,377.24	128,907.11		252,284.35
291 Other Retirement Plans	749.91	749.91		1,499.82
299 All Other Employee Benefits	3,163.00	3,163.00		6,326.00
Total Personnel Services – Employee Benefits	\$237,086.43	\$245,125.14		\$482,211.57
300 <u>Purchased Professional and Technical Services</u>				
330 Other Professional Services	36,371.81	36,371.80		72,743.61
Total Purchased Professional and Technical Services	\$36,371.81	\$36,371.80		\$72,743.61
500 <u>Other Purchased Services</u>				
530 Communications	54.09	54.08		108.17
580 Travel	1,029.21	1,029.20		2,058.41
Total Other Purchased Services	\$1,083.30	\$1,083.28		\$2,166.58
600 <u>Supplies</u>				
610 General Supplies	3,747.51	3,747.51		7,495.02
650 Supplies & Fees – Technology Related	2,514.79	2,514.79		5,029.58
Total Supplies	\$6,262.30	\$6,262.30		\$12,524.60
Total 2110 Supervision of Student Services	\$640,506.30	\$664,672.14		\$1,305,178.44

LEA : 125234502 Haverford Township SD

Printed 12/30/2020 2:18:15 PM

General Fund (10)				
2111 Supervision of Student Services – Head of Component	<u>Elementary</u>	<u>Secondary</u>	<u>Federal</u>	<u>Total</u>
100 <u>Personnel Services – Salaries</u>				
100 Personnel Services – Salaries	359,702.46	375,829.62		735,532.08
Total Personnel Services – Salaries	\$359,702.46	\$375,829.62		\$735,532.08
200 <u>Personnel Services – Employee Benefits</u>				
210 Group Insurance – Contracted Provider	82,916.85	83,978.61		166,895.46
220 Social Security Contributions	26,879.43	28,326.51		55,205.94
230 PSERS Retirement Contributions	123,377.24	128,907.11		252,284.35
291 Other Retirement Plans	749.91	749.91		1,499.82
299 All Other Employee Benefits	3,163.00	3,163.00		6,326.00
Total Personnel Services – Employee Benefits	\$237,086.43	\$245,125.14		\$482,211.57
300 <u>Purchased Professional and Technical Services</u>				
330 Other Professional Services	36,371.81	36,371.80		72,743.61
Total Purchased Professional and Technical Services	\$36,371.81	\$36,371.80		\$72,743.61
500 <u>Other Purchased Services</u>				
530 Communications	54.09	54.08		108.17
580 Travel	1,029.21	1,029.20		2,058.41
Total Other Purchased Services	\$1,083.30	\$1,083.28		\$2,166.58
600 <u>Supplies</u>				
610 General Supplies	3,747.51	3,747.51		7,495.02
650 Supplies & Fees – Technology Related	2,514.79	2,514.79		5,029.58
Total Supplies	\$6,262.30	\$6,262.30		\$12,524.60
Total 2111 Supervision of Student Services – Head of Component	\$640,506.30	\$664,672.14		\$1,305,178.44

LEA : 125234502 Haverford Township SD

Printed 12/30/2020 2:18:15 PM

General Fund (10)				
2120 Guidance Services	<u>Elementary</u>	<u>Secondary</u>	<u>Federal</u>	<u>Total</u>
100 <u>Personnel Services – Salaries</u>				
100 Personnel Services – Salaries	946,976.85	953,882.83		1,900,859.68
Total Personnel Services – Salaries	\$946,976.85	\$953,882.83		\$1,900,859.68
200 <u>Personnel Services – Employee Benefits</u>				
210 Group Insurance – Contracted Provider	180,988.77	224,362.81		405,351.58
220 Social Security Contributions	70,912.77	70,620.25		141,533.02
230 PSERS Retirement Contributions	325,113.03	327,294.34		652,407.37
Total Personnel Services – Employee Benefits	\$577,014.57	\$622,277.40		\$1,199,291.97
300 <u>Purchased Professional and Technical Services</u>				
330 Other Professional Services		650.00		650.00
Total Purchased Professional and Technical Services		\$650.00		\$650.00
600 <u>Supplies</u>				
640 Books and Periodicals	520.48			520.48
Total Supplies	\$520.48			\$520.48
800 <u>Other Objects</u>				
810 Dues and Fees		748.53		748.53
Total Other Objects		\$748.53		\$748.53
Total 2120 Guidance Services	\$1,524,511.90	\$1,577,558.76		\$3,102,070.66

LEA : 125234502 Haverford Township SD

Printed 12/30/2020 2:18:15 PM

General Fund (10)				
2140 Psychological Services	<u>Elementary</u>	<u>Secondary</u>	<u>Federal</u>	<u>Total</u>
100 <u>Personnel Services – Salaries</u>				
100 Personnel Services – Salaries	306,320.98	306,320.98		612,641.96
Total Personnel Services – Salaries	\$306,320.98	\$306,320.98		\$612,641.96
200 <u>Personnel Services – Employee Benefits</u>				
210 Group Insurance – Contracted Provider	80,923.85	80,923.84		161,847.69
220 Social Security Contributions	22,517.17	22,517.16		45,034.33
230 PSERS Retirement Contributions	104,933.57	104,933.56		209,867.13
Total Personnel Services – Employee Benefits	\$208,374.59	\$208,374.56		\$416,749.15
300 <u>Purchased Professional and Technical Services</u>				
330 Other Professional Services	2,850.97	2,850.97		5,701.94
Total Purchased Professional and Technical Services	\$2,850.97	\$2,850.97		\$5,701.94
Total 2140 Psychological Services	\$517,546.54	\$517,546.51		\$1,035,093.05

LEA : 125234502 Haverford Township SD

Printed 12/30/2020 2:18:15 PM

General Fund (10)

2160 Social Work Services	<u>Elementary</u>	<u>Secondary</u>	<u>Federal</u>	<u>Total</u>
100 <u>Personnel Services – Salaries</u>				
100 Personnel Services – Salaries				207,982.22
Total Personnel Services – Salaries				\$207,982.22
200 <u>Personnel Services – Employee Benefits</u>				
210 Group Insurance – Contracted Provider				51,066.08
220 Social Security Contributions				14,976.67
230 PSERS Retirement Contributions				71,317.19
Total Personnel Services – Employee Benefits				\$137,359.94
500 <u>Other Purchased Services</u>				
580 Travel				247.37
Total Other Purchased Services				\$247.37
Total 2160 Social Work Services				\$345,589.53

LEA : 125234502 Haverford Township SD

Printed 12/30/2020 2:18:15 PM

General Fund (10)				
2170 Student Accounting Services	<u>Elementary</u>	<u>Secondary</u>	<u>Federal</u>	<u>Total</u>
100 <u>Personnel Services – Salaries</u>				
100 Personnel Services – Salaries				23,534.77
Total Personnel Services – Salaries				\$23,534.77
200 <u>Personnel Services – Employee Benefits</u>				
220 Social Security Contributions				1,800.42
230 PSERS Retirement Contributions				8,070.03
Total Personnel Services – Employee Benefits				\$9,870.45
Total 2170 Student Accounting Services				\$33,405.22

LEA : 125234502 Haverford Township SD

Printed 12/30/2020 2:18:15 PM

General Fund (10)

2200 Support Services – Instructional Staff	Elementary	Secondary	Federal	Total
100 <u>Personnel Services – Salaries</u>				
100 Personnel Services – Salaries	1,328,096.05	923,838.67	20,268.98	2,272,203.70
Total Personnel Services – Salaries	\$1,328,096.05	\$923,838.67	\$20,268.98	\$2,272,203.70
200 <u>Personnel Services – Employee Benefits</u>				
210 Group Insurance – Contracted Provider	255,953.04	212,360.54		468,313.58
220 Social Security Contributions	97,560.08	66,242.32	1,478.52	165,280.92
230 PSERS Retirement Contributions	455,769.37	316,929.40	6,687.08	779,385.85
240 Tuition Reimbursement	93,396.50	111,471.64		204,868.14
291 Other Retirement Plans	12,680.70	21,400.69		34,081.39
Total Personnel Services – Employee Benefits	\$915,359.69	\$728,404.59	\$8,165.60	\$1,651,929.88
300 <u>Purchased Professional and Technical Services</u>				
322 Professional Educational Services – lus			10,884.00	10,884.00
329 Professional Educational Services – Other	16,621.13	15,451.34	18,085.25	50,157.72
330 Other Professional Services	7,631.19	7,642.19	34,232.65	49,506.03
Total Purchased Professional and Technical Services	\$24,252.32	\$23,093.53	\$63,201.90	\$110,547.75
500 <u>Other Purchased Services</u>				
530 Communications	2,100.00	2,100.00		4,200.00
580 Travel	3,049.28	6,575.00	2,595.98	12,220.26
599 Other Miscellaneous Purchased Services	524.50	524.50		1,049.00
Total Other Purchased Services	\$5,673.78	\$9,199.50	\$2,595.98	\$17,469.26
600 <u>Supplies</u>				
610 General Supplies	1,442.02	7,712.31		9,154.33
630 Food	2,849.06	2,849.05		5,698.11
640 Books and Periodicals	21,736.89	14,234.92	7,055.41	43,027.22
650 Supplies & Fees – Technology Related	15,633.34	31,031.26		46,664.60
Total Supplies	\$41,661.31	\$55,827.54	\$7,055.41	\$104,544.26
700 <u>Property</u>				
758 Capitalized Technology Software - Original	15,808.37	5,151.13		20,959.50
762 Capitalized Equipment - Replacement	1,089.45	1,089.45		2,178.90
Total Property	\$16,897.82	\$6,240.58		\$23,138.40
800 <u>Other Objects</u>				
810 Dues and Fees	2,692.00	2,145.00		4,837.00
Total Other Objects	\$2,692.00	\$2,145.00		\$4,837.00
Total 2200 Support Services – Instructional Staff	\$2,334,632.97	\$1,748,749.41	\$101,287.87	\$4,184,670.25

LEA : 125234502 Haverford Township SD

Printed 12/30/2020 2:18:15 PM

General Fund (10)				
2220 Technology Support Services	Elementary	Secondary	Federal	Total
100 Personnel Services – Salaries				
100 Personnel Services – Salaries	208,278.42	359,527.85		567,806.27
Total Personnel Services – Salaries	\$208,278.42	\$359,527.85		\$567,806.27
200 Personnel Services – Employee Benefits				
210 Group Insurance – Contracted Provider	48,128.31	80,779.93		128,908.24
220 Social Security Contributions	14,461.51	25,876.62		40,338.13
230 PSERS Retirement Contributions	71,418.62	123,281.93		194,700.55
291 Other Retirement Plans	12,680.70	12,680.69		25,361.39
Total Personnel Services – Employee Benefits	\$146,689.14	\$242,619.17		\$389,308.31
300 Purchased Professional and Technical Services				
329 Professional Educational Services – Other	1,100.00	1,100.00		2,200.00
330 Other Professional Services	1,927.19	1,927.19		3,854.38
Total Purchased Professional and Technical Services	\$3,027.19	\$3,027.19		\$6,054.38
500 Other Purchased Services				
530 Communications	2,100.00	2,100.00		4,200.00
580 Travel	1,028.70	1,028.69		2,057.39
Total Other Purchased Services	\$3,128.70	\$3,128.69		\$6,257.39
600 Supplies				
610 General Supplies	209.10	7,064.77		7,273.87
630 Food	188.23	188.22		376.45
640 Books and Periodicals	118.80	118.79		237.59
650 Supplies & Fees – Technology Related	15,290.34	25,720.56		41,010.90
Total Supplies	\$15,806.47	\$33,092.34		\$48,898.81
700 Property				
758 Capitalized Technology Software - Original	15,808.37	5,151.13		20,959.50
762 Capitalized Equipment - Replacement	1,089.45	1,089.45		2,178.90
Total Property	\$16,897.82	\$6,240.58		\$23,138.40
800 Other Objects				
810 Dues and Fees	2,080.00	2,080.00		4,160.00
Total Other Objects	\$2,080.00	\$2,080.00		\$4,160.00
Total 2220 Technology Support Services	\$395,907.74	\$649,715.82		\$1,045,623.56

LEA : 125234502 Haverford Township SD

Printed 12/30/2020 2:18:15 PM

General Fund (10)

2240 Computer-Assisted Instruction Support Services	<u>Elementary</u>	<u>Secondary</u>	<u>Federal</u>	<u>Total</u>
100 <u>Personnel Services – Salaries</u>				
100 Personnel Services – Salaries	162,051.47	105,142.40		267,193.87
Total Personnel Services – Salaries	\$162,051.47	\$105,142.40		\$267,193.87
200 <u>Personnel Services – Employee Benefits</u>				
210 Group Insurance – Contracted Provider	67,630.94	51,967.15		119,598.09
220 Social Security Contributions	12,298.22	7,451.68		19,749.90
230 PSERS Retirement Contributions	55,447.59	36,053.33		91,500.92
Total Personnel Services – Employee Benefits	\$135,376.75	\$95,472.16		\$230,848.91
Total 2240 Computer-Assisted Instruction Support Services	\$297,428.22	\$200,614.56		\$498,042.78

LEA : 125234502 Haverford Township SD

Printed 12/30/2020 2:18:15 PM

General Fund (10)				
2250 School Library Services	<u>Elementary</u>	<u>Secondary</u>	<u>Federal</u>	<u>Total</u>
100 <u>Personnel Services – Salaries</u>				
100 Personnel Services – Salaries	584,025.29	205,997.58		790,022.87
Total Personnel Services – Salaries	\$584,025.29	\$205,997.58		\$790,022.87
200 <u>Personnel Services – Employee Benefits</u>				
210 Group Insurance – Contracted Provider	85,551.66	47,419.39		132,971.05
220 Social Security Contributions	44,197.24	15,249.51		59,446.75
230 PSERS Retirement Contributions	200,602.13	70,636.50		271,238.63
291 Other Retirement Plans		8,720.00		8,720.00
Total Personnel Services – Employee Benefits	\$330,351.03	\$142,025.40		\$472,376.43
600 <u>Supplies</u>				
610 General Supplies	966.23	380.86		1,347.09
640 Books and Periodicals	19,635.39	13,862.96		33,498.35
650 Supplies & Fees – Technology Related		4,967.70		4,967.70
Total Supplies	\$20,601.62	\$19,211.52		\$39,813.14
Total 2250 School Library Services	\$934,977.94	\$367,234.50		\$1,302,212.44

LEA : 125234502 Haverford Township SD

Printed 12/30/2020 2:18:15 PM

General Fund (10)

2260 Instruction and Curriculum Development Services	<u>Elementary</u>	<u>Secondary</u>	<u>Federal</u>	<u>Total</u>
100 <u>Personnel Services – Salaries</u>				
100 Personnel Services – Salaries	373,740.87	253,170.84	5,225.75	632,137.46
Total Personnel Services – Salaries	\$373,740.87	\$253,170.84	\$5,225.75	\$632,137.46
200 <u>Personnel Services – Employee Benefits</u>				
210 Group Insurance – Contracted Provider	54,642.13	32,194.07		86,836.20
220 Social Security Contributions	26,603.11	17,664.51	399.75	44,667.37
230 PSERS Retirement Contributions	128,301.03	86,957.64	1,669.49	216,928.16
Total Personnel Services – Employee Benefits	\$209,546.27	\$136,816.22	\$2,069.24	\$348,431.73
300 <u>Purchased Professional and Technical Services</u>				
329 Professional Educational Services – Other	11,841.67	11,841.68	4,052.68	27,736.03
330 Other Professional Services	3,065.00	3,065.00	13,353.96	19,483.96
Total Purchased Professional and Technical Services	\$14,906.67	\$14,906.68	\$17,406.64	\$47,219.99
500 <u>Other Purchased Services</u>				
580 Travel	340.40	1,544.63	1,477.63	3,362.66
599 Other Miscellaneous Purchased Services	524.50	524.50		1,049.00
Total Other Purchased Services	\$864.90	\$2,069.13	\$1,477.63	\$4,411.66
600 <u>Supplies</u>				
610 General Supplies	266.69	266.68		533.37
640 Books and Periodicals	242.68		4,484.15	4,726.83
650 Supplies & Fees – Technology Related	343.00	343.00		686.00
Total Supplies	\$852.37	\$609.68	\$4,484.15	\$5,946.20
800 <u>Other Objects</u>				
810 Dues and Fees	612.00	65.00		677.00
Total Other Objects	\$612.00	\$65.00		\$677.00
Total 2260 Instruction and Curriculum Development Services	\$600,523.08	\$407,637.55	\$30,663.41	\$1,038,824.04

LEA : 125234502 Haverford Township SD

Printed 12/30/2020 2:18:15 PM

General Fund (10)

2270 Instructional Staff Professional Development Services	Elementary	Secondary	Federal	Total
100 <u>Personnel Services – Salaries</u>				
100 Personnel Services – Salaries			15,043.23	15,043.23
Total Personnel Services – Salaries			\$15,043.23	\$15,043.23
200 <u>Personnel Services – Employee Benefits</u>				
220 Social Security Contributions			1,078.77	1,078.77
230 PSERS Retirement Contributions			5,017.59	5,017.59
240 Tuition Reimbursement	93,396.50	111,471.64		204,868.14
Total Personnel Services – Employee Benefits	\$93,396.50	\$111,471.64	\$6,096.36	\$210,964.50
300 <u>Purchased Professional and Technical Services</u>				
329 Professional Educational Services – Other	3,679.46	2,509.66	14,032.57	20,221.69
330 Other Professional Services	2,639.00	2,650.00	20,878.69	26,167.69
Total Purchased Professional and Technical Services	\$6,318.46	\$5,159.66	\$34,911.26	\$46,389.38
500 <u>Other Purchased Services</u>				
580 Travel	1,680.18	4,001.68	1,118.35	6,800.21
Total Other Purchased Services	\$1,680.18	\$4,001.68	\$1,118.35	\$6,800.21
600 <u>Supplies</u>				
630 Food	2,660.83	2,660.83		5,321.66
640 Books and Periodicals	1,740.02	253.17	2,571.26	4,564.45
Total Supplies	\$4,400.85	\$2,914.00	\$2,571.26	\$9,886.11
Total 2270 Instructional Staff Professional Development Services	\$105,795.99	\$123,546.98	\$59,740.46	\$289,083.43

LEA : 125234502 Haverford Township SD

Printed 12/30/2020 2:18:15 PM

General Fund (10)

2280 Nonpublic Support Services

	<u>Elementary</u>	<u>Secondary</u>	<u>Federal</u>	<u>Total</u>
300 <u>Purchased Professional and Technical Services</u>				
322 Professional Educational Services – lus			10,884.00	10,884.00
Total Purchased Professional and Technical Services			\$10,884.00	\$10,884.00
Total 2280 Nonpublic Support Services			\$10,884.00	\$10,884.00

LEA : 125234502 Haverford Township SD

Printed 12/30/2020 2:18:15 PM

General Fund (10)				
2300 Support Services – Administration	Elementary	Secondary	Federal	Total
100 Personnel Services – Salaries				
100 Personnel Services – Salaries	1,463,241.40	1,033,364.92		2,957,784.75
Total Personnel Services – Salaries	\$1,463,241.40	\$1,033,364.92		\$2,957,784.75
200 Personnel Services – Employee Benefits				
210 Group Insurance – Contracted Provider	298,359.76	201,986.71		613,337.70
220 Social Security Contributions	107,151.93	76,104.75		210,651.49
230 PSERS Retirement Contributions	501,417.09	350,730.10		1,007,169.15
291 Other Retirement Plans		32,040.06		35,919.38
299 All Other Employee Benefits	7,155.00	4,590.00		11,745.00
Total Personnel Services – Employee Benefits	\$914,083.78	\$665,451.62		\$1,878,822.72
300 Purchased Professional and Technical Services				
329 Professional Educational Services – Other				553.00
330 Other Professional Services	1,456.35	110,354.80		439,581.99
Total Purchased Professional and Technical Services	\$1,456.35	\$110,354.80		\$440,134.99
400 Purchased Property Services				
440 Rentals		6,025.00		6,025.00
Total Purchased Property Services		\$6,025.00		\$6,025.00
500 Other Purchased Services				
520 Insurance – General				103,827.00
530 Communications				7,690.65
549 Other Advertising/Public Relations				3,542.96
550 Printing and Binding		8,104.63		8,104.63
580 Travel	48.84	250.00		2,304.16
599 Other Miscellaneous Purchased Services				78.38
Total Other Purchased Services	\$48.84	\$8,354.63		\$125,547.78
600 Supplies				
610 General Supplies	754.11	12,551.97		22,229.22
630 Food	1,446.96	4,914.81		11,996.89
640 Books and Periodicals		1,053.64		1,486.52
650 Supplies & Fees – Technology Related				12,375.00
Total Supplies	\$2,201.07	\$18,520.42		\$48,087.63
700 Property				
752 Capital Equipment – Original and Additional		1,125.00		1,125.00
762 Capitalized Equipment - Replacement		15,817.14		15,817.14
Total Property		\$16,942.14		\$16,942.14
800 Other Objects				
810 Dues and Fees	3,415.98	4,794.92		225,389.18
Total Other Objects	\$3,415.98	\$4,794.92		\$225,389.18
Total 2300 Support Services – Administration	\$2,384,447.42	\$1,863,808.45		\$5,698,734.19

LEA : 125234502 Haverford Township SD

Printed 12/30/2020 2:18:15 PM

General Fund (10)				
2310 Board Services	<u>Elementary</u>	<u>Secondary</u>	<u>Federal</u>	<u>Total</u>
300 <u>Purchased Professional and Technical Services</u>				
330 Other Professional Services				19,500.00
Total Purchased Professional and Technical Services				\$19,500.00
500 <u>Other Purchased Services</u>				
520 Insurance – General				103,827.00
549 Other Advertising/Public Relations				3,542.96
599 Other Miscellaneous Purchased Services				78.38
Total Other Purchased Services				\$107,448.34
600 <u>Supplies</u>				
610 General Supplies				767.37
630 Food				3,157.64
650 Supplies & Fees – Technology Related				12,375.00
Total Supplies				\$16,300.01
800 <u>Other Objects</u>				
810 Dues and Fees				16,696.42
Total Other Objects				\$16,696.42
Total 2310 Board Services				\$159,944.77

LEA : 125234502 Haverford Township SD

Printed 12/30/2020 2:18:15 PM

General Fund (10)				
2330 Tax Assessment and Collection Services	<u>Elementary</u>	<u>Secondary</u>	<u>Federal</u>	<u>Total</u>
100 <u>Personnel Services – Salaries</u>				
100 Personnel Services – Salaries				39,047.18
Total Personnel Services – Salaries				\$39,047.18
200 <u>Personnel Services – Employee Benefits</u>				
210 Group Insurance – Contracted Provider				16,755.60
220 Social Security Contributions				2,802.10
230 PSERS Retirement Contributions				13,261.98
Total Personnel Services – Employee Benefits				\$32,819.68
500 <u>Other Purchased Services</u>				
530 Communications				7,690.65
Total Other Purchased Services				\$7,690.65
600 <u>Supplies</u>				
610 General Supplies				4,028.69
Total Supplies				\$4,028.69
Total 2330 Tax Assessment and Collection Services				\$83,586.20

LEA : 125234502 Haverford Township SD

Printed 12/30/2020 2:18:15 PM

General Fund (10)

2350 Legal and Accounting Services	<u>Elementary</u>	<u>Secondary</u>	<u>Federal</u>	<u>Total</u>
300 <u>Purchased Professional and Technical Services</u>				
330 Other Professional Services				283,419.50
Total Purchased Professional and Technical Services				\$283,419.50
Total 2350 Legal and Accounting Services				\$283,419.50

LEA : 125234502 Haverford Township SD

Printed 12/30/2020 2:18:15 PM

General Fund (10)				
2360 Office of the Superintendent / Executive Director Services	<u>Elementary</u>	<u>Secondary</u>	<u>Federal</u>	<u>Total</u>
100 <u>Personnel Services – Salaries</u>				
100 Personnel Services – Salaries				308,686.25
Total Personnel Services – Salaries				\$308,686.25
200 <u>Personnel Services – Employee Benefits</u>				
210 Group Insurance – Contracted Provider				45,293.37
220 Social Security Contributions				16,632.62
230 PSERS Retirement Contributions				102,859.74
291 Other Retirement Plans				3,879.32
Total Personnel Services – Employee Benefits				\$168,665.05
300 <u>Purchased Professional and Technical Services</u>				
329 Professional Educational Services – Other				553.00
330 Other Professional Services				24,851.34
Total Purchased Professional and Technical Services				\$25,404.34
500 <u>Other Purchased Services</u>				
580 Travel				1,546.38
Total Other Purchased Services				\$1,546.38
600 <u>Supplies</u>				
610 General Supplies				3,450.43
630 Food				2,477.48
640 Books and Periodicals				432.88
Total Supplies				\$6,360.79
800 <u>Other Objects</u>				
810 Dues and Fees				9,112.34
Total Other Objects				\$9,112.34
Total 2360 Office of the Superintendent / Executive Director Services				\$519,775.15

LEA : 125234502 Haverford Township SD

Printed 12/30/2020 2:18:15 PM

General Fund (10)				
2370 Community Relations Services	<u>Elementary</u>	<u>Secondary</u>	<u>Federal</u>	<u>Total</u>
100 <u>Personnel Services – Salaries</u>				
100 Personnel Services – Salaries				113,445.00
Total Personnel Services – Salaries				\$113,445.00
200 <u>Personnel Services – Employee Benefits</u>				
210 Group Insurance – Contracted Provider				50,942.26
220 Social Security Contributions				7,960.09
230 PSERS Retirement Contributions				38,900.24
Total Personnel Services – Employee Benefits				\$97,802.59
500 <u>Other Purchased Services</u>				
580 Travel				458.94
Total Other Purchased Services				\$458.94
600 <u>Supplies</u>				
610 General Supplies				676.65
Total Supplies				\$676.65
Total 2370 Community Relations Services				\$212,383.18

LEA : 125234502 Haverford Township SD

Printed 12/30/2020 2:18:15 PM

General Fund (10)				
2380 Office of the Principal Services		<u>Elementary</u>	<u>Secondary</u>	<u>Federal</u>
100 <u>Personnel Services – Salaries</u>				<u>Total</u>
100 Personnel Services – Salaries		1,463,241.40	1,033,364.92	2,496,606.32
Total Personnel Services – Salaries		\$1,463,241.40	\$1,033,364.92	\$2,496,606.32
200 <u>Personnel Services – Employee Benefits</u>				
210 Group Insurance – Contracted Provider		298,359.76	201,986.71	500,346.47
220 Social Security Contributions		107,151.93	76,104.75	183,256.68
230 PSERS Retirement Contributions		501,417.09	350,730.10	852,147.19
291 Other Retirement Plans			32,040.06	32,040.06
299 All Other Employee Benefits		7,155.00	4,590.00	11,745.00
Total Personnel Services – Employee Benefits		\$914,083.78	\$665,451.62	\$1,579,535.40
300 <u>Purchased Professional and Technical Services</u>				
330 Other Professional Services		1,456.35	110,354.80	111,811.15
Total Purchased Professional and Technical Services		\$1,456.35	\$110,354.80	\$111,811.15
400 <u>Purchased Property Services</u>				
440 Rentals			6,025.00	6,025.00
Total Purchased Property Services			\$6,025.00	\$6,025.00
500 <u>Other Purchased Services</u>				
550 Printing and Binding			8,104.63	8,104.63
580 Travel		48.84	250.00	298.84
Total Other Purchased Services		\$48.84	\$8,354.63	\$8,403.47
600 <u>Supplies</u>				
610 General Supplies		754.11	12,551.97	13,306.08
630 Food		1,446.96	4,914.81	6,361.77
640 Books and Periodicals			1,053.64	1,053.64
Total Supplies		\$2,201.07	\$18,520.42	\$20,721.49
700 <u>Property</u>				
752 Capital Equipment – Original and Additional			1,125.00	1,125.00
762 Capitalized Equipment - Replacement			15,817.14	15,817.14
Total Property			\$16,942.14	\$16,942.14
800 <u>Other Objects</u>				
810 Dues and Fees		3,415.98	4,794.92	8,210.90
Total Other Objects		\$3,415.98	\$4,794.92	\$8,210.90
Total 2380 Office of the Principal Services		\$2,384,447.42	\$1,863,808.45	\$4,248,255.87

LEA : 125234502 Haverford Township SD

Printed 12/30/2020 2:18:15 PM

General Fund (10)				
2390 Other Administration Services	<u>Elementary</u>	<u>Secondary</u>	<u>Federal</u>	<u>Total</u>
800 <u>Other Objects</u>				
810 Dues and Fees				191,369.52
Total Other Objects				\$191,369.52
Total 2390 Other Administration Services				\$191,369.52

LEA : 125234502 Haverford Township SD

Printed 12/30/2020 2:18:15 PM

General Fund (10)				
2400 Support Services – Pupil Health	<u>Elementary</u>	<u>Secondary</u>	<u>Federal</u>	<u>Total</u>
100 <u>Personnel Services – Salaries</u>				
100 Personnel Services – Salaries				1,176,278.89
Total Personnel Services – Salaries				\$1,176,278.89
200 <u>Personnel Services – Employee Benefits</u>				
210 Group Insurance – Contracted Provider				273,309.62
220 Social Security Contributions				90,243.73
230 PSERS Retirement Contributions				402,454.20
291 Other Retirement Plans				22,475.00
Total Personnel Services – Employee Benefits				\$788,482.55
300 <u>Purchased Professional and Technical Services</u>				
330 Other Professional Services				252,574.86
Total Purchased Professional and Technical Services				\$252,574.86
500 <u>Other Purchased Services</u>				
580 Travel				142.86
Total Other Purchased Services				\$142.86
600 <u>Supplies</u>				
610 General Supplies				11,211.72
Total Supplies				\$11,211.72
700 <u>Property</u>				
762 Capitalized Equipment - Replacement				1,224.65
Total Property				\$1,224.65
Total 2400 Support Services – Pupil Health				\$2,229,915.53

LEA : 125234502 Haverford Township SD

Printed 12/30/2020 2:18:15 PM

General Fund (10)

2420 Medical Services

Elementary Secondary Federal Total

100 <u>Personnel Services – Salaries</u>				
100 Personnel Services – Salaries				251,744.69
Total Personnel Services – Salaries				\$251,744.69
200 <u>Personnel Services – Employee Benefits</u>				
210 Group Insurance – Contracted Provider				46,140.62
220 Social Security Contributions				19,897.21
230 PSERS Retirement Contributions				86,717.50
Total Personnel Services – Employee Benefits				\$152,755.33
300 <u>Purchased Professional and Technical Services</u>				
330 Other Professional Services				252,574.86
Total Purchased Professional and Technical Services				\$252,574.86
Total 2420 Medical Services				\$657,074.88

LEA : 125234502 Haverford Township SD

Printed 12/30/2020 2:18:15 PM

General Fund (10)

2430 Dental Services

	<u>Elementary</u>	<u>Secondary</u>	<u>Federal</u>	<u>Total</u>
100 <u>Personnel Services – Salaries</u>				
100 Personnel Services – Salaries				10,938.30
Total Personnel Services – Salaries				\$10,938.30
200 <u>Personnel Services – Employee Benefits</u>				
220 Social Security Contributions				836.79
230 PSERS Retirement Contributions				3,750.73
Total Personnel Services – Employee Benefits				\$4,587.52
Total 2430 Dental Services				\$15,525.82

LEA : 125234502 Haverford Township SD

Printed 12/30/2020 2:18:15 PM

General Fund (10)				
2440 Nursing Services				
	<u>Elementary</u>	<u>Secondary</u>	<u>Federal</u>	<u>Total</u>
100 <u>Personnel Services – Salaries</u>				
100 Personnel Services – Salaries				818,151.72
Total Personnel Services – Salaries				\$818,151.72
200 <u>Personnel Services – Employee Benefits</u>				
210 Group Insurance – Contracted Provider				210,820.13
220 Social Security Contributions				62,378.77
230 PSERS Retirement Contributions				279,258.17
291 Other Retirement Plans				22,475.00
Total Personnel Services – Employee Benefits				\$574,932.07
500 <u>Other Purchased Services</u>				
580 Travel				142.86
Total Other Purchased Services				\$142.86
600 <u>Supplies</u>				
610 General Supplies				11,211.72
Total Supplies				\$11,211.72
700 <u>Property</u>				
762 Capitalized Equipment - Replacement				1,224.65
Total Property				\$1,224.65
Total 2440 Nursing Services				\$1,405,663.02

LEA : 125234502 Haverford Township SD

Printed 12/30/2020 2:18:15 PM

General Fund (10)

2450 Nonpublic Health Services	<u>Elementary</u>	<u>Secondary</u>	<u>Federal</u>	<u>Total</u>
100 <u>Personnel Services – Salaries</u>				
100 Personnel Services – Salaries				95,444.18
Total Personnel Services – Salaries				\$95,444.18
200 <u>Personnel Services – Employee Benefits</u>				
210 Group Insurance – Contracted Provider				16,348.87
220 Social Security Contributions				7,130.96
230 PSERS Retirement Contributions				32,727.80
Total Personnel Services – Employee Benefits				\$56,207.63
Total 2450 Nonpublic Health Services				\$151,651.81

LEA : 125234502 Haverford Township SD

Printed 12/30/2020 2:18:15 PM

General Fund (10)				
2500 Support Services – Business	<u>Elementary</u>	<u>Secondary</u>	<u>Federal</u>	<u>Total</u>
100 <u>Personnel Services – Salaries</u>				
100 Personnel Services – Salaries				709,976.24
Total Personnel Services – Salaries				\$709,976.24
200 <u>Personnel Services – Employee Benefits</u>				
210 Group Insurance – Contracted Provider				197,567.16
220 Social Security Contributions				50,130.52
230 PSERS Retirement Contributions				242,988.73
291 Other Retirement Plans				3,759.85
Total Personnel Services – Employee Benefits				\$494,446.26
300 <u>Purchased Professional and Technical Services</u>				
329 Professional Educational Services – Other				125.00
330 Other Professional Services				17,137.36
340 Technical Services				2,800.00
Total Purchased Professional and Technical Services				\$20,062.36
400 <u>Purchased Property Services</u>				
430 Repairs and Maintenance Services				13,978.00
Total Purchased Property Services				\$13,978.00
500 <u>Other Purchased Services</u>				
530 Communications				2,698.84
580 Travel				87.26
Total Other Purchased Services				\$2,786.10
600 <u>Supplies</u>				
610 General Supplies				58,326.71
650 Supplies & Fees – Technology Related				41,057.20
Total Supplies				\$99,383.91
700 <u>Property</u>				
762 Capitalized Equipment - Replacement				70,665.41
Total Property				\$70,665.41
800 <u>Other Objects</u>				
810 Dues and Fees				7,820.87
Total Other Objects				\$7,820.87
Total 2500 Support Services – Business				\$1,419,119.15

LEA : 125234502 Haverford Township SD

Printed 12/30/2020 2:18:15 PM

General Fund (10)				
2510 Fiscal Services	<u>Elementary</u>	<u>Secondary</u>	<u>Federal</u>	<u>Total</u>
100 <u>Personnel Services – Salaries</u>				
100 Personnel Services – Salaries				532,225.24
Total Personnel Services – Salaries				\$532,225.24
200 <u>Personnel Services – Employee Benefits</u>				
210 Group Insurance – Contracted Provider				144,555.54
220 Social Security Contributions				37,263.70
230 PSERS Retirement Contributions				182,499.97
291 Other Retirement Plans				3,759.85
Total Personnel Services – Employee Benefits				\$368,079.06
300 <u>Purchased Professional and Technical Services</u>				
329 Professional Educational Services – Other				125.00
330 Other Professional Services				17,137.36
340 Technical Services				2,800.00
Total Purchased Professional and Technical Services				\$20,062.36
400 <u>Purchased Property Services</u>				
430 Repairs and Maintenance Services				13,978.00
Total Purchased Property Services				\$13,978.00
500 <u>Other Purchased Services</u>				
530 Communications				2,698.84
580 Travel				87.26
Total Other Purchased Services				\$2,786.10
600 <u>Supplies</u>				
610 General Supplies				58,326.71
650 Supplies & Fees – Technology Related				41,057.20
Total Supplies				\$99,383.91
700 <u>Property</u>				
762 Capitalized Equipment - Replacement				70,665.41
Total Property				\$70,665.41
800 <u>Other Objects</u>				
810 Dues and Fees				7,820.87
Total Other Objects				\$7,820.87
Total 2510 Fiscal Services				\$1,115,000.95

LEA : 125234502 Haverford Township SD

Printed 12/30/2020 2:18:15 PM

General Fund (10)				
2511 Supervision of Fiscal Services - Head of Component	<u>Elementary</u>	<u>Secondary</u>	<u>Federal</u>	<u>Total</u>
100 <u>Personnel Services – Salaries</u>				
100 Personnel Services – Salaries				532,225.24
Total Personnel Services – Salaries				\$532,225.24
200 <u>Personnel Services – Employee Benefits</u>				
210 Group Insurance – Contracted Provider				144,555.54
220 Social Security Contributions				37,263.70
230 PSERS Retirement Contributions				182,499.97
291 Other Retirement Plans				3,759.85
Total Personnel Services – Employee Benefits				\$368,079.06
300 <u>Purchased Professional and Technical Services</u>				
329 Professional Educational Services – Other				125.00
330 Other Professional Services				17,137.36
340 Technical Services				2,800.00
Total Purchased Professional and Technical Services				\$20,062.36
400 <u>Purchased Property Services</u>				
430 Repairs and Maintenance Services				13,978.00
Total Purchased Property Services				\$13,978.00
500 <u>Other Purchased Services</u>				
530 Communications				2,698.84
580 Travel				87.26
Total Other Purchased Services				\$2,786.10
600 <u>Supplies</u>				
610 General Supplies				58,326.71
650 Supplies & Fees – Technology Related				41,057.20
Total Supplies				\$99,383.91
700 <u>Property</u>				
762 Capitalized Equipment - Replacement				70,665.41
Total Property				\$70,665.41
800 <u>Other Objects</u>				
810 Dues and Fees				7,820.87
Total Other Objects				\$7,820.87
Total 2511 Supervision of Fiscal Services - Head of Component				\$1,115,000.95

LEA : 125234502 Haverford Township SD

Printed 12/30/2020 2:18:15 PM

General Fund (10)

2520 Purchasing Services

	<u>Elementary</u>	<u>Secondary</u>	<u>Federal</u>	<u>Total</u>
100 <u>Personnel Services – Salaries</u>				
100 Personnel Services – Salaries				74,099.07
Total Personnel Services – Salaries				\$74,099.07
200 <u>Personnel Services – Employee Benefits</u>				
210 Group Insurance – Contracted Provider				24,732.43
220 Social Security Contributions				5,263.65
230 PSERS Retirement Contributions				25,256.69
Total Personnel Services – Employee Benefits				\$55,252.77
Total 2520 Purchasing Services				\$129,351.84

LEA : 125234502 Haverford Township SD

Printed 12/30/2020 2:18:15 PM

General Fund (10)

2530 Warehousing and Distributing Services	<u>Elementary</u>	<u>Secondary</u>	<u>Federal</u>	<u>Total</u>
100 <u>Personnel Services – Salaries</u>				
100 Personnel Services – Salaries				60,944.35
Total Personnel Services – Salaries				\$60,944.35
200 <u>Personnel Services – Employee Benefits</u>				
210 Group Insurance – Contracted Provider				24,808.78
220 Social Security Contributions				4,391.68
230 PSERS Retirement Contributions				20,897.82
Total Personnel Services – Employee Benefits				\$50,098.28
Total 2530 Warehousing and Distributing Services				\$111,042.63

LEA : 125234502 Haverford Township SD

Printed 12/30/2020 2:18:15 PM

General Fund (10)				
2540 Printing, Publishing and Duplicating Services	<u>Elementary</u>	<u>Secondary</u>	<u>Federal</u>	<u>Total</u>
100 <u>Personnel Services – Salaries</u>				
100 Personnel Services – Salaries				42,707.58
Total Personnel Services – Salaries				\$42,707.58
200 <u>Personnel Services – Employee Benefits</u>				
210 Group Insurance – Contracted Provider				3,470.41
220 Social Security Contributions				3,211.49
230 PSERS Retirement Contributions				14,334.25
Total Personnel Services – Employee Benefits				\$21,016.15
Total 2540 Printing, Publishing and Duplicating Services				\$63,723.73

LEA : 125234502 Haverford Township SD

Printed 12/30/2020 2:18:15 PM

General Fund (10)				
2600 Operation and Maintenance of Plant Services	<u>Elementary</u>	<u>Secondary</u>	<u>Federal</u>	<u>Total</u>
100 <u>Personnel Services – Salaries</u>				
100 Personnel Services – Salaries				3,335,415.29
Total Personnel Services – Salaries				\$3,335,415.29
200 <u>Personnel Services – Employee Benefits</u>				
210 Group Insurance – Contracted Provider				790,901.90
220 Social Security Contributions				248,400.75
230 PSERS Retirement Contributions				1,139,233.72
291 Other Retirement Plans				43,258.72
Total Personnel Services – Employee Benefits				\$2,221,795.09
300 <u>Purchased Professional and Technical Services</u>				
329 Professional Educational Services – Other				755.00
330 Other Professional Services				1,107.61
Total Purchased Professional and Technical Services				\$1,862.61
400 <u>Purchased Property Services</u>				
410 Cleaning Services				45,893.80
420 Utility Services				904,770.60
430 Repairs and Maintenance Services				840,416.60
440 Rentals				197,987.27
Total Purchased Property Services				\$1,989,068.27
500 <u>Other Purchased Services</u>				
523 General Property and Liability Insurance				269,992.99
529 Other Insurance				4,702.50
530 Communications				96,877.40
580 Travel				920.48
Total Other Purchased Services				\$372,493.37
600 <u>Supplies</u>				
610 General Supplies	221,315.31	246,538.58		467,853.89
620 Energy				249,771.92
Total Supplies	\$221,315.31	\$246,538.58		\$717,625.81
700 <u>Property</u>				
752 Capital Equipment – Original and Additional				51,477.80
762 Capitalized Equipment - Replacement				25,396.13
Total Property				\$76,873.93
800 <u>Other Objects</u>				
810 Dues and Fees				5,023.56
Total Other Objects				\$5,023.56
Total 2600 Operation and Maintenance of Plant Services	\$221,315.31	\$246,538.58		\$8,720,157.93

LEA : 125234502 Haverford Township SD

Printed 12/30/2020 2:18:15 PM

General Fund (10)				
2610 Supervision of Operation and Maintenance of Plant Services	<u>Elementary</u>	<u>Secondary</u>	<u>Federal</u>	<u>Total</u>
100 <u>Personnel Services – Salaries</u>				
100 Personnel Services – Salaries				184,350.80
Total Personnel Services – Salaries				\$184,350.80
200 <u>Personnel Services – Employee Benefits</u>				
210 Group Insurance – Contracted Provider				53,365.74
220 Social Security Contributions				13,579.30
230 PSERS Retirement Contributions				63,412.90
Total Personnel Services – Employee Benefits				\$130,357.94
300 <u>Purchased Professional and Technical Services</u>				
329 Professional Educational Services – Other				755.00
Total Purchased Professional and Technical Services				\$755.00
500 <u>Other Purchased Services</u>				
580 Travel				920.48
Total Other Purchased Services				\$920.48
600 <u>Supplies</u>				
610 General Supplies	6,685.45	6,685.44		13,370.89
Total Supplies	\$6,685.45	\$6,685.44		\$13,370.89
700 <u>Property</u>				
752 Capital Equipment – Original and Additional				1,890.00
Total Property				\$1,890.00
800 <u>Other Objects</u>				
810 Dues and Fees				3,523.86
Total Other Objects				\$3,523.86
Total 2610 Supervision of Operation and Maintenance of Plant Services	\$6,685.45	\$6,685.44		\$335,168.97

LEA : 125234502 Haverford Township SD

Printed 12/30/2020 2:18:15 PM

General Fund (10)				
2611 Supervision of Operation and Maintenance of Plant Services – Head of Component	<u>Elementary</u>	<u>Secondary</u>	<u>Federal</u>	<u>Total</u>
100 <u>Personnel Services – Salaries</u>				
100 Personnel Services – Salaries				184,350.80
Total Personnel Services – Salaries				\$184,350.80
200 <u>Personnel Services – Employee Benefits</u>				
210 Group Insurance – Contracted Provider				53,365.74
220 Social Security Contributions				13,579.30
230 PSERS Retirement Contributions				63,412.90
Total Personnel Services – Employee Benefits				\$130,357.94
300 <u>Purchased Professional and Technical Services</u>				
329 Professional Educational Services – Other				755.00
Total Purchased Professional and Technical Services				\$755.00
500 <u>Other Purchased Services</u>				
580 Travel				920.48
Total Other Purchased Services				\$920.48
600 <u>Supplies</u>				
610 General Supplies	6,685.45	6,685.44		13,370.89
Total Supplies	\$6,685.45	\$6,685.44		\$13,370.89
700 <u>Property</u>				
752 Capital Equipment – Original and Additional				1,890.00
Total Property				\$1,890.00
800 <u>Other Objects</u>				
810 Dues and Fees				3,523.86
Total Other Objects				\$3,523.86
Total 2611 Supervision of Operation and Maintenance of Plant Services – Head of Component	\$6,685.45	\$6,685.44		\$335,168.97

LEA : 125234502 Haverford Township SD

Printed 12/30/2020 2:18:15 PM

General Fund (10)				
2620 Operation of Buildings Services	<u>Elementary</u>	<u>Secondary</u>	<u>Federal</u>	<u>Total</u>
100 <u>Personnel Services – Salaries</u>				
100 Personnel Services – Salaries				2,746,534.75
Total Personnel Services – Salaries				\$2,746,534.75
200 <u>Personnel Services – Employee Benefits</u>				
210 Group Insurance – Contracted Provider				638,905.41
220 Social Security Contributions				204,935.14
230 PSERS Retirement Contributions				941,334.10
291 Other Retirement Plans				43,258.72
Total Personnel Services – Employee Benefits				\$1,828,433.37
300 <u>Purchased Professional and Technical Services</u>				
330 Other Professional Services				1,107.61
Total Purchased Professional and Technical Services				\$1,107.61
400 <u>Purchased Property Services</u>				
410 Cleaning Services				45,893.80
420 Utility Services				904,770.60
430 Repairs and Maintenance Services				805,802.20
440 Rentals				185,164.51
Total Purchased Property Services				\$1,941,631.11
500 <u>Other Purchased Services</u>				
523 General Property and Liability Insurance				269,992.99
529 Other Insurance				4,702.50
530 Communications				96,877.40
Total Other Purchased Services				\$371,572.89
600 <u>Supplies</u>				
610 General Supplies	170,529.78	195,753.08		366,282.86
620 Energy				249,771.92
Total Supplies	\$170,529.78	\$195,753.08		\$616,054.78
700 <u>Property</u>				
752 Capital Equipment – Original and Additional				49,587.80
Total Property				\$49,587.80
800 <u>Other Objects</u>				
810 Dues and Fees				1,499.70
Total Other Objects				\$1,499.70
Total 2620 Operation of Buildings Services	\$170,529.78	\$195,753.08		\$7,556,422.01

LEA : 125234502 Haverford Township SD

Printed 12/30/2020 2:18:15 PM

General Fund (10)				
2630 Care and Upkeep of Grounds Services	<u>Elementary</u>	<u>Secondary</u>	<u>Federal</u>	<u>Total</u>
100 <u>Personnel Services – Salaries</u>				
100 Personnel Services – Salaries				354,355.79
Total Personnel Services – Salaries				\$354,355.79
200 <u>Personnel Services – Employee Benefits</u>				
210 Group Insurance – Contracted Provider				98,630.75
220 Social Security Contributions				26,088.22
230 PSERS Retirement Contributions				117,281.95
Total Personnel Services – Employee Benefits				\$242,000.92
400 <u>Purchased Property Services</u>				
430 Repairs and Maintenance Services				20,423.45
440 Rentals				12,822.76
Total Purchased Property Services				\$33,246.21
600 <u>Supplies</u>				
610 General Supplies	36,815.19	36,815.18		73,630.37
Total Supplies	\$36,815.19	\$36,815.18		\$73,630.37
700 <u>Property</u>				
762 Capitalized Equipment - Replacement				25,396.13
Total Property				\$25,396.13
Total 2630 Care and Upkeep of Grounds Services	\$36,815.19	\$36,815.18		\$728,629.42

LEA : 125234502 Haverford Township SD

Printed 12/30/2020 2:18:15 PM

General Fund (10)

2650 Vehicle Operation and Maintenance Services (Other Than Student Transportation Vehicles)	<u>Elementary</u>	<u>Secondary</u>	<u>Federal</u>	<u>Total</u>
400 <u>Purchased Property Services</u>				
430 Repairs and Maintenance Services				14,190.95
Total Purchased Property Services				\$14,190.95
600 <u>Supplies</u>				
610 General Supplies	6,780.84	6,780.83		13,561.67
Total Supplies	\$6,780.84	\$6,780.83		\$13,561.67
Total 2650 Vehicle Operation and Maintenance Services (Other Than Student Transportation Vehicles)	\$6,780.84	\$6,780.83		\$27,752.62

LEA : 125234502 Haverford Township SD

Printed 12/30/2020 2:18:15 PM

General Fund (10)				
2660 Safety and Security Services	<u>Elementary</u>	<u>Secondary</u>	<u>Federal</u>	<u>Total</u>
100 <u>Personnel Services – Salaries</u>				
100 Personnel Services – Salaries				50,173.95
Total Personnel Services – Salaries				\$50,173.95
200 <u>Personnel Services – Employee Benefits</u>				
220 Social Security Contributions				3,798.09
230 PSERS Retirement Contributions				17,204.77
Total Personnel Services – Employee Benefits				\$21,002.86
600 <u>Supplies</u>				
610 General Supplies	504.05	504.05		1,008.10
Total Supplies	\$504.05	\$504.05		\$1,008.10
Total 2660 Safety and Security Services	\$504.05	\$504.05		\$72,184.91

LEA : 125234502 Haverford Township SD

Printed 12/30/2020 2:18:15 PM

Page - 43 of 58

General Fund (10)				
2700 Student Transportation Services	<u>Elementary</u>	<u>Secondary</u>	<u>Federal</u>	<u>Total</u>
100 <u>Personnel Services – Salaries</u>				
100 Personnel Services – Salaries				2,548,336.86
Total Personnel Services – Salaries				\$2,548,336.86
200 <u>Personnel Services – Employee Benefits</u>				
210 Group Insurance – Contracted Provider				364,607.61
220 Social Security Contributions				199,626.91
230 PSERS Retirement Contributions				872,667.43
250 Unemployment Compensation				420.00
Total Personnel Services – Employee Benefits				\$1,437,321.95
300 <u>Purchased Professional and Technical Services</u>				
329 Professional Educational Services – Other				1,500.00
330 Other Professional Services				6,959.00
Total Purchased Professional and Technical Services				\$8,459.00
400 <u>Purchased Property Services</u>				
430 Repairs and Maintenance Services				97,609.20
440 Rentals				410,281.75
Total Purchased Property Services				\$507,890.95
500 <u>Other Purchased Services</u>				
513 Contracted Carriers				6,544.00
516 Student Transportation Services From the IU				46,171.04
519 Student Transportation Services From Other Sources				2,426.00
522 Automotive Liability Insurance				97,201.00
530 Communications				1,003.00
580 Travel				4,181.18
Total Other Purchased Services				\$157,526.22
600 <u>Supplies</u>				
610 General Supplies				142,249.41
620 Energy				190,890.59
630 Food				1,436.28
640 Books and Periodicals				434.00
Total Supplies				\$335,010.28
700 <u>Property</u>				
752 Capital Equipment – Original and Additional				2,500.00
758 Capitalized Technology Software - Original				2,516.50
762 Capitalized Equipment - Replacement				4,339.57
Total Property				\$9,356.07
800 <u>Other Objects</u>				
810 Dues and Fees				581.50
Total Other Objects				\$581.50
Total 2700 Student Transportation Services				\$5,004,482.83

LEA : 125234502 Haverford Township SD

Printed 12/30/2020 2:18:15 PM

General Fund (10)				
2710 Supervision of Student Transportation Services	<u>Elementary</u>	<u>Secondary</u>	<u>Federal</u>	<u>Total</u>
100 <u>Personnel Services – Salaries</u>				
100 Personnel Services – Salaries				280,977.83
Total Personnel Services – Salaries				\$280,977.83
200 <u>Personnel Services – Employee Benefits</u>				
210 Group Insurance – Contracted Provider				109,415.64
220 Social Security Contributions				26,862.54
230 PSERS Retirement Contributions				96,231.89
Total Personnel Services – Employee Benefits				\$232,510.07
300 <u>Purchased Professional and Technical Services</u>				
330 Other Professional Services				6,959.00
Total Purchased Professional and Technical Services				\$6,959.00
400 <u>Purchased Property Services</u>				
440 Rentals				70,736.74
Total Purchased Property Services				\$70,736.74
500 <u>Other Purchased Services</u>				
513 Contracted Carriers				6,544.00
516 Student Transportation Services From the IU				46,171.04
519 Student Transportation Services From Other Sources				2,426.00
522 Automotive Liability Insurance				97,201.00
530 Communications				1,003.00
580 Travel				4,181.18
Total Other Purchased Services				\$157,526.22
600 <u>Supplies</u>				
610 General Supplies				501.52
630 Food				1,436.28
640 Books and Periodicals				434.00
Total Supplies				\$2,371.80
700 <u>Property</u>				
758 Capitalized Technology Software - Original				2,516.50
762 Capitalized Equipment - Replacement				3,994.63
Total Property				\$6,511.13
800 <u>Other Objects</u>				
810 Dues and Fees				581.50
Total Other Objects				\$581.50
Total 2710 Supervision of Student Transportation Services				\$758,174.29

LEA : 125234502 Haverford Township SD

Printed 12/30/2020 2:18:15 PM

General Fund (10)				
2719 Supervision of Student Transportation Services – All Other Supervision	<u>Elementary</u>	<u>Secondary</u>	<u>Federal</u>	<u>Total</u>
100 <u>Personnel Services – Salaries</u>				
100 Personnel Services – Salaries				280,977.83
Total Personnel Services – Salaries				\$280,977.83
200 <u>Personnel Services – Employee Benefits</u>				
210 Group Insurance – Contracted Provider				109,415.64
220 Social Security Contributions				26,862.54
230 PSERS Retirement Contributions				96,231.89
Total Personnel Services – Employee Benefits				\$232,510.07
300 <u>Purchased Professional and Technical Services</u>				
330 Other Professional Services				6,959.00
Total Purchased Professional and Technical Services				\$6,959.00
400 <u>Purchased Property Services</u>				
440 Rentals				70,736.74
Total Purchased Property Services				\$70,736.74
500 <u>Other Purchased Services</u>				
513 Contracted Carriers				6,544.00
516 Student Transportation Services From the IU				46,171.04
519 Student Transportation Services From Other Sources				2,426.00
522 Automotive Liability Insurance				97,201.00
530 Communications				1,003.00
580 Travel				4,181.18
Total Other Purchased Services				\$157,526.22
600 <u>Supplies</u>				
610 General Supplies				501.52
630 Food				1,436.28
640 Books and Periodicals				434.00
Total Supplies				\$2,371.80
700 <u>Property</u>				
758 Capitalized Technology Software - Original				2,516.50
762 Capitalized Equipment - Replacement				3,994.63
Total Property				\$6,511.13
800 <u>Other Objects</u>				
810 Dues and Fees				581.50
Total Other Objects				\$581.50
Total 2719 Supervision of Student Transportation Services – All Other Supervision				\$758,174.29

LEA : 125234502 Haverford Township SD

Printed 12/30/2020 2:18:15 PM

General Fund (10)				
2720 Vehicle Operation Services	<u>Elementary</u>	<u>Secondary</u>	<u>Federal</u>	<u>Total</u>
100 <u>Personnel Services – Salaries</u>				
100 Personnel Services – Salaries				1,608,628.07
Total Personnel Services – Salaries				\$1,608,628.07
200 <u>Personnel Services – Employee Benefits</u>				
210 Group Insurance – Contracted Provider				154,864.27
220 Social Security Contributions				123,135.89
230 PSERS Retirement Contributions				550,793.99
250 Unemployment Compensation				324.37
Total Personnel Services – Employee Benefits				\$829,118.52
300 <u>Purchased Professional and Technical Services</u>				
329 Professional Educational Services – Other				1,158.45
Total Purchased Professional and Technical Services				\$1,158.45
400 <u>Purchased Property Services</u>				
440 Rentals				262,230.61
Total Purchased Property Services				\$262,230.61
600 <u>Supplies</u>				
610 General Supplies				963.61
Total Supplies				\$963.61
700 <u>Property</u>				
762 Capitalized Equipment - Replacement				266.40
Total Property				\$266.40
Total 2720 Vehicle Operation Services				\$2,702,365.66

LEA : 125234502 Haverford Township SD

Printed 12/30/2020 2:18:15 PM

General Fund (10)				
2740 Vehicle Servicing and Maintenance Services	<u>Elementary</u>	<u>Secondary</u>	<u>Federal</u>	<u>Total</u>
100 <u>Personnel Services – Salaries</u>				
100 Personnel Services – Salaries				184,453.33
Total Personnel Services – Salaries				\$184,453.33
200 <u>Personnel Services – Employee Benefits</u>				
210 Group Insurance – Contracted Provider				54,668.51
220 Social Security Contributions				13,323.88
230 PSERS Retirement Contributions				63,248.97
Total Personnel Services – Employee Benefits				\$131,241.36
400 <u>Purchased Property Services</u>				
430 Repairs and Maintenance Services				97,609.20
Total Purchased Property Services				\$97,609.20
600 <u>Supplies</u>				
610 General Supplies				140,500.17
620 Energy				190,890.59
Total Supplies				\$331,390.76
700 <u>Property</u>				
752 Capital Equipment – Original and Additional				2,500.00
Total Property				\$2,500.00
Total 2740 Vehicle Servicing and Maintenance Services				\$747,194.65

LEA : 125234502 Haverford Township SD

Printed 12/30/2020 2:18:15 PM

General Fund (10)				
2750 Nonpublic Transportation	<u>Elementary</u>	<u>Secondary</u>	<u>Federal</u>	<u>Total</u>
100 <u>Personnel Services – Salaries</u>				
100 Personnel Services – Salaries				474,277.63
Total Personnel Services – Salaries				\$474,277.63
200 <u>Personnel Services – Employee Benefits</u>				
210 Group Insurance – Contracted Provider				45,659.19
220 Social Security Contributions				36,304.60
230 PSERS Retirement Contributions				162,392.58
250 Unemployment Compensation				95.63
Total Personnel Services – Employee Benefits				\$244,452.00
300 <u>Purchased Professional and Technical Services</u>				
329 Professional Educational Services – Other				341.55
Total Purchased Professional and Technical Services				\$341.55
400 <u>Purchased Property Services</u>				
440 Rentals				77,314.40
Total Purchased Property Services				\$77,314.40
600 <u>Supplies</u>				
610 General Supplies				284.11
Total Supplies				\$284.11
700 <u>Property</u>				
762 Capitalized Equipment - Replacement				78.54
Total Property				\$78.54
Total 2750 Nonpublic Transportation				\$796,748.23

LEA : 125234502 Haverford Township SD

Printed 12/30/2020 2:18:15 PM

General Fund (10)					
2800 Support Services – Central		Elementary	Secondary	Federal	Total
100 <u>Personnel Services – Salaries</u>					
100 Personnel Services – Salaries					672,435.47
Total Personnel Services – Salaries					\$672,435.47
200 <u>Personnel Services – Employee Benefits</u>					
210 Group Insurance – Contracted Provider					143,883.61
220 Social Security Contributions					47,559.85
230 PSERS Retirement Contributions					230,361.97
291 Other Retirement Plans					6,874.41
Total Personnel Services – Employee Benefits					\$428,679.84
300 <u>Purchased Professional and Technical Services</u>					
329 Professional Educational Services – Other					90,532.20
330 Other Professional Services					17,909.40
340 Technical Services					2,537.37
Total Purchased Professional and Technical Services					\$110,978.97
400 <u>Purchased Property Services</u>					
430 Repairs and Maintenance Services					445,727.01
440 Rentals					74,266.50
Total Purchased Property Services					\$519,993.51
500 <u>Other Purchased Services</u>					
530 Communications					92,415.15
580 Travel					1,779.39
Total Other Purchased Services					\$94,194.54
600 <u>Supplies</u>					
610 General Supplies					1,064.84
650 Supplies & Fees – Technology Related					695.01
Total Supplies					\$1,759.85
700 <u>Property</u>					
752 Capital Equipment – Original and Additional					190,507.93
Total Property					\$190,507.93
800 <u>Other Objects</u>					
810 Dues and Fees					2,238.00
Total Other Objects					\$2,238.00
Total 2800 Support Services – Central					\$2,020,788.11

LEA : 125234502 Haverford Township SD

Printed 12/30/2020 2:18:15 PM

General Fund (10)

2820 Information Services	<u>Elementary</u>	<u>Secondary</u>	<u>Federal</u>	<u>Total</u>
500 <u>Other Purchased Services</u>				
530 Communications				23,129.30
Total Other Purchased Services				\$23,129.30
Total 2820 Information Services				\$23,129.30

LEA : 125234502 Haverford Township SD

Printed 12/30/2020 2:18:15 PM

General Fund (10)				
2821 Supervision of Information Services	<u>Elementary</u>	<u>Secondary</u>	<u>Federal</u>	<u>Total</u>
500 <u>Other Purchased Services</u>				
530 Communications				23,129.30
Total Other Purchased Services				\$23,129.30
Total 2821 Supervision of Information Services				\$23,129.30

LEA : 125234502 Haverford Township SD

Printed 12/30/2020 2:18:15 PM

General Fund (10)				
2830 Staff Services	<u>Elementary</u>	<u>Secondary</u>	<u>Federal</u>	<u>Total</u>
100 <u>Personnel Services – Salaries</u>				
100 Personnel Services – Salaries				408,294.87
Total Personnel Services – Salaries				\$408,294.87
200 <u>Personnel Services – Employee Benefits</u>				
210 Group Insurance – Contracted Provider				99,964.28
220 Social Security Contributions				27,090.93
230 PSERS Retirement Contributions				140,004.62
291 Other Retirement Plans				6,874.41
Total Personnel Services – Employee Benefits				\$273,934.24
300 <u>Purchased Professional and Technical Services</u>				
329 Professional Educational Services – Other				90,532.20
330 Other Professional Services				17,909.40
340 Technical Services				2,526.87
Total Purchased Professional and Technical Services				\$110,968.47
500 <u>Other Purchased Services</u>				
580 Travel				350.00
Total Other Purchased Services				\$350.00
600 <u>Supplies</u>				
610 General Supplies				669.89
Total Supplies				\$669.89
800 <u>Other Objects</u>				
810 Dues and Fees				2,238.00
Total Other Objects				\$2,238.00
Total 2830 Staff Services				\$796,455.47

LEA : 125234502 Haverford Township SD

Printed 12/30/2020 2:18:15 PM

General Fund (10)				
2831 Supervision of Staff Services	<u>Elementary</u>	<u>Secondary</u>	<u>Federal</u>	<u>Total</u>
100 <u>Personnel Services – Salaries</u>				
100 Personnel Services – Salaries				408,294.87
Total Personnel Services – Salaries				\$408,294.87
200 <u>Personnel Services – Employee Benefits</u>				
210 Group Insurance – Contracted Provider				99,964.28
220 Social Security Contributions				27,090.93
230 PSERS Retirement Contributions				140,004.62
291 Other Retirement Plans				6,874.41
Total Personnel Services – Employee Benefits				\$273,934.24
300 <u>Purchased Professional and Technical Services</u>				
330 Other Professional Services				17,909.40
340 Technical Services				2,526.87
Total Purchased Professional and Technical Services				\$20,436.27
500 <u>Other Purchased Services</u>				
580 Travel				350.00
Total Other Purchased Services				\$350.00
600 <u>Supplies</u>				
610 General Supplies				669.89
Total Supplies				\$669.89
800 <u>Other Objects</u>				
810 Dues and Fees				2,238.00
Total Other Objects				\$2,238.00
Total 2831 Supervision of Staff Services				\$705,923.27

LEA : 125234502 Haverford Township SD

Printed 12/30/2020 2:18:15 PM

General Fund (10)

2832 Recruitment and Placement Services

Elementary

Secondary

Federal

Total

300 Purchased Professional and Technical Services

329 Professional Educational Services – Other

90,532.20

Total Purchased Professional and Technical Services				\$90,532.20
Total 2832 Recruitment and Placement Services				\$90,532.20

LEA : 125234502 Haverford Township SD

Printed 12/30/2020 2:18:15 PM

General Fund (10)				
2840 Data Processing Services	<u>Elementary</u>	<u>Secondary</u>	<u>Federal</u>	<u>Total</u>
100 <u>Personnel Services – Salaries</u>				
100 Personnel Services – Salaries				264,140.60
Total Personnel Services – Salaries				\$264,140.60
200 <u>Personnel Services – Employee Benefits</u>				
210 Group Insurance – Contracted Provider				43,919.33
220 Social Security Contributions				20,468.92
230 PSERS Retirement Contributions				90,357.35
Total Personnel Services – Employee Benefits				\$154,745.60
500 <u>Other Purchased Services</u>				
580 Travel				1,429.39
Total Other Purchased Services				\$1,429.39
600 <u>Supplies</u>				
610 General Supplies				394.95
Total Supplies				\$394.95
Total 2840 Data Processing Services				\$420,710.54

LEA : 125234502 Haverford Township SD

Printed 12/30/2020 2:18:15 PM

General Fund (10)				
2860 Management Services	<u>Elementary</u>	<u>Secondary</u>	<u>Federal</u>	<u>Total</u>
300 <u>Purchased Professional and Technical Services</u>				
340 Technical Services				10.50
Total Purchased Professional and Technical Services				\$10.50
400 <u>Purchased Property Services</u>				
430 Repairs and Maintenance Services				445,727.01
440 Rentals				74,266.50
Total Purchased Property Services				\$519,993.51
500 <u>Other Purchased Services</u>				
530 Communications				69,285.85
Total Other Purchased Services				\$69,285.85
600 <u>Supplies</u>				
650 Supplies & Fees – Technology Related				695.01
Total Supplies				\$695.01
700 <u>Property</u>				
752 Capital Equipment – Original and Additional				190,507.93
Total Property				\$190,507.93
Total 2860 Management Services				\$780,492.80

LEA : 125234502 Haverford Township SD

Printed 12/30/2020 2:18:15 PM

General Fund (10)

2900 Other Support Services	<u>Elementary</u>	<u>Secondary</u>	<u>Federal</u>	<u>Total</u>
300 <u>Purchased Professional and Technical Services</u>				
330 Other Professional Services				2,882.10
Total Purchased Professional and Technical Services				\$2,882.10
500 <u>Other Purchased Services</u>				
595 IU Payments By Withholding				109,650.09
Total Other Purchased Services				\$109,650.09
Total 2900 Other Support Services				\$112,532.19

LEA : 125234502 Haverford Township SD

Printed 12/30/2020 2:18:15 PM

General Fund (10)				
2910 Support Services Not Listed Elsewhere In the 2000 Series	<u>Elementary</u>	<u>Secondary</u>	<u>Federal</u>	<u>Total</u>
300 <u>Purchased Professional and Technical Services</u>				
330 Other Professional Services				2,882.10
Total Purchased Professional and Technical Services				\$2,882.10
500 <u>Other Purchased Services</u>				
595 IU Payments By Withholding				109,650.09
Total Other Purchased Services				\$109,650.09
Total 2910 Support Services Not Listed Elsewhere In the 2000 Series				\$112,532.19

LEA : 125234502 Haverford Township SD

Printed 12/30/2020 2:18:22 PM

General Fund (10)	
3000 Operation of Non-Instructional Services	<u>Total</u>
100 <u>Personnel Services – Salaries</u>	
100 Personnel Services – Salaries	737,336.37
Total Personnel Services – Salaries	\$737,336.37
200 <u>Personnel Services – Employee Benefits</u>	
210 Group Insurance – Contracted Provider	43,043.85
220 Social Security Contributions	55,221.44
230 PSERS Retirement Contributions	211,368.52
250 Unemployment Compensation	1,052.59
Total Personnel Services – Employee Benefits	\$310,686.40
300 <u>Purchased Professional and Technical Services</u>	
330 Other Professional Services	50,760.37
340 Technical Services	1,705.00
390 Other Purchased Professional and Technical Services	60,116.00
Total Purchased Professional and Technical Services	\$112,581.37
400 <u>Purchased Property Services</u>	
410 Cleaning Services	8,269.60
430 Repairs and Maintenance Services	127.50
440 Rentals	26,077.50
Total Purchased Property Services	\$34,474.60
500 <u>Other Purchased Services</u>	
520 Insurance – General	12,174.00
550 Printing and Binding	954.50
580 Travel	15,140.55
591 Services Purchased Locally	184,307.78
Total Other Purchased Services	\$212,576.83
600 <u>Supplies</u>	
610 General Supplies	88,005.20
650 Supplies & Fees – Technology Related	9,684.00
Total Supplies	\$97,689.20
700 <u>Property</u>	
752 Capital Equipment – Original and Additional	13,252.35
758 Capitalized Technology Software - Original	3,507.56
762 Capitalized Equipment - Replacement	10,192.59
Total Property	\$26,952.50
800 <u>Other Objects</u>	
810 Dues and Fees	27,453.16
Total Other Objects	\$27,453.16
Total 3000 Operation of Non-Instructional Services	\$1,559,750.43

LEA : 125234502 Haverford Township SD

Printed 12/30/2020 2:18:22 PM

General Fund (10)				
3200 Student Activities				
	<u>Elementary</u>	<u>Secondary</u>	<u>Federal</u>	<u>Total</u>
100 <u>Personnel Services – Salaries</u>				
100 Personnel Services – Salaries				737,336.37
Total Personnel Services – Salaries				\$737,336.37
200 <u>Personnel Services – Employee Benefits</u>				
210 Group Insurance – Contracted Provider				43,043.85
220 Social Security Contributions				55,221.44
230 PSERS Retirement Contributions				211,368.52
250 Unemployment Compensation				1,052.59
Total Personnel Services – Employee Benefits				\$310,686.40
300 <u>Purchased Professional and Technical Services</u>				
330 Other Professional Services				50,760.37
340 Technical Services				1,705.00
390 Other Purchased Professional and Technical Services				60,116.00
Total Purchased Professional and Technical Services				\$112,581.37
400 <u>Purchased Property Services</u>				
410 Cleaning Services				8,269.60
430 Repairs and Maintenance Services				127.50
440 Rentals				26,077.50
Total Purchased Property Services				\$34,474.60
500 <u>Other Purchased Services</u>				
520 Insurance – General				12,174.00
550 Printing and Binding				954.50
580 Travel				15,140.55
Total Other Purchased Services				\$28,269.05
600 <u>Supplies</u>				
610 General Supplies				87,490.83
650 Supplies & Fees – Technology Related				9,684.00
Total Supplies				\$97,174.83
700 <u>Property</u>				
752 Capital Equipment – Original and Additional				13,252.35
758 Capitalized Technology Software - Original				3,507.56
762 Capitalized Equipment - Replacement				10,192.59
Total Property				\$26,952.50
800 <u>Other Objects</u>				
810 Dues and Fees				27,453.16
Total Other Objects				\$27,453.16
Total 3200 Student Activities				\$1,374,928.28

LEA : 125234502 Haverford Township SD

Printed 12/30/2020 2:18:22 PM

General Fund (10)

3300 Community Services	<u>Elementary</u>	<u>Secondary</u>	<u>Federal</u>	<u>Total</u>
500 <u>Other Purchased Services</u>				
591 Services Purchased Locally				184,307.78
Total Other Purchased Services				\$184,307.78
600 <u>Supplies</u>				
610 General Supplies			514.37	514.37
Total Supplies			\$514.37	\$514.37
Total 3300 Community Services			\$514.37	\$184,822.15

LEA : 125234502 Haverford Township SD

Printed 12/30/2020 2:18:31 PM

General Fund (10)

5000 Other Expenditures and Financing Uses		<u>Total</u>
800 <u>Other Objects</u>		
830 Interest		4,152,826.29
880 Refunds of Prior Years' Receipts		8,487.84
Total Other Objects		\$4,161,314.13
900 <u>Other Uses of Funds</u>		
910 Redemption of Principal		5,765,000.00
939 Other Fund Transfers		1,272,008.00
Total Other Uses of Funds		\$7,037,008.00
Total 5000 Other Expenditures and Financing Uses		\$11,198,322.13

LEA : 125234502 Haverford Township SD

Printed 12/30/2020 2:18:31 PM

General Fund (10)

5100 Debt Service / Other Expenditures and Financing Uses	<u>Elementary</u>	<u>Secondary</u>	<u>Federal</u>	<u>Total</u>
800 <u>Other Objects</u>				
830 Interest				4,152,826.29
880 Refunds of Prior Years' Receipts				8,487.84
Total Other Objects				\$4,161,314.13
900 <u>Other Uses of Funds</u>				
910 Redemption of Principal				5,765,000.00
Total Other Uses of Funds				\$5,765,000.00
Total 5100 Debt Service / Other Expenditures and Financing Uses				\$9,926,314.13

LEA : 125234502 Haverford Township SD

Printed 12/30/2020 2:18:31 PM

General Fund (10)				
5110 Debt Service	<u>Elementary</u>	<u>Secondary</u>	<u>Federal</u>	<u>Total</u>
800 <u>Other Objects</u>				
830 Interest				4,152,826.29
Total Other Objects				\$4,152,826.29
900 <u>Other Uses of Funds</u>				
910 Redemption of Principal				5,765,000.00
Total Other Uses of Funds				\$5,765,000.00
Total 5110 Debt Service				\$9,917,826.29

LEA : 125234502 Haverford Township SD

Printed 12/30/2020 2:18:31 PM

General Fund (10)

5130 Refund of Prior Year Revenues / Receipts	<u>Elementary</u>	<u>Secondary</u>	<u>Federal</u>	<u>Total</u>
800 <u>Other Objects</u>				
880 Refunds of Prior Years' Receipts				8,487.84
Total Other Objects				\$8,487.84
Total 5130 Refund of Prior Year Revenues / Receipts				\$8,487.84

LEA : 125234502 Haverford Township SD

Printed 12/30/2020 2:18:31 PM

General Fund (10)				
5200 Interfund Transfers – Out	<u>Elementary</u>	<u>Secondary</u>	<u>Federal</u>	<u>Total</u>
900 <u>Other Uses of Funds</u>				
939 Other Fund Transfers				1,272,008.00
Total Other Uses of Funds				\$1,272,008.00
Total 5200 Interfund Transfers – Out				\$1,272,008.00

LEA : 125234502 Haverford Township SD

Printed 12/30/2020 2:18:31 PM

General Fund (10)

5230 Capital Projects Fund Transfers	<u>Elementary</u>	<u>Secondary</u>	<u>Federal</u>	<u>Total</u>
900 <u>Other Uses of Funds</u>				
939 Other Fund Transfers				1,272,008.00
Total Other Uses of Funds				\$1,272,008.00
Total 5230 Capital Projects Fund Transfers				\$1,272,008.00

LEA : 125234502 Haverford Township SD

Printed 12/30/2020 2:18:19 PM

Other Capital Projects Fund (39)

2000 Support Services		<u>Total</u>
400 <u>Purchased Property Services</u>		
440 Rentals		673,522.25
Total Purchased Property Services		\$673,522.25
800 <u>Other Objects</u>		
810 Dues and Fees		282,818.76
Total Other Objects		\$282,818.76
Total 2000 Support Services		\$956,341.01

<u>Elementary</u>	<u>Secondary</u>	<u>Federal</u>	<u>Total</u>
-------------------	------------------	----------------	--------------

<u>Elementary</u>	<u>Secondary</u>	<u>Federal</u>	<u>Total</u>
-------------------	------------------	----------------	--------------

<u>Elementary</u>	<u>Secondary</u>	<u>Federal</u>	<u>Total</u>
-------------------	------------------	----------------	--------------

282,818.76

\$282,818.76

\$282,818.76

LEA : 125234502 Haverford Township SD

Printed 12/30/2020 2:18:19 PM

Other Capital Projects Fund (39)

2390 Other Administration Services

	<u>Elementary</u>	<u>Secondary</u>	<u>Federal</u>	<u>Total</u>
800 <u>Other Objects</u>				
810 Dues and Fees				282,818.76
Total Other Objects				\$282,818.76
Total 2390 Other Administration Services				\$282,818.76

LEA : 125234502 Haverford Township SD

Printed 12/30/2020 2:18:19 PM

Other Capital Projects Fund (39)

2700 Student Transportation Services

<u>Elementary</u>	<u>Secondary</u>	<u>Federal</u>	<u>Total</u>
-------------------	------------------	----------------	--------------

400 Purchased Property Services

440 Rentals			349,601.00
-------------	--	--	------------

Total Purchased Property Services			\$349,601.00
-----------------------------------	--	--	--------------

Total 2700 Student Transportation Services			\$349,601.00
--	--	--	--------------

LEA : 125234502 Haverford Township SD

Printed 12/30/2020 2:18:19 PM

Other Capital Projects Fund (39)

2720 Vehicle Operation Services

400 Purchased Property Services

	<u>Elementary</u>	<u>Secondary</u>	<u>Federal</u>	<u>Total</u>
440 Rentals				349,601.00
Total Purchased Property Services				\$349,601.00
Total 2720 Vehicle Operation Services				\$349,601.00

LEA : 125234502 Haverford Township SD

Printed 12/30/2020 2:18:19 PM

Other Capital Projects Fund (39)

2800 Support Services – Central

400 Purchased Property Services

440 Rentals				323,921.25
Total Purchased Property Services				\$323,921.25
Total 2800 Support Services – Central				\$323,921.25

LEA : 125234502 Haverford Township SD

Printed 12/30/2020 2:18:19 PM

Other Capital Projects Fund (39)

2820 Information Services

400 Purchased Property Services

440 Rentals				323,921.25
Total Purchased Property Services				\$323,921.25
Total 2820 Information Services				\$323,921.25

LEA : 125234502 Haverford Township SD

Printed 12/30/2020 2:18:19 PM

Other Capital Projects Fund (39)

2821 Supervision of Information Services

Elementary

Secondary

Federal

Total

400 Purchased Property Services

440 Rentals				323,921.25
-------------	--	--	--	------------

Total Purchased Property Services				\$323,921.25
-----------------------------------	--	--	--	--------------

Total 2821 Supervision of Information Services				\$323,921.25
--	--	--	--	--------------

LEA : 125234502 Haverford Township SD

Printed 12/30/2020 2:18:26 PM

Other Capital Projects Fund (39)

4000 Facilities Acquisition, Construction and Improvement Services

Total

400 <u>Purchased Property Services</u>	
450 Construction Services	15,371,376.22
Total Purchased Property Services	\$15,371,376.22
Total 4000 Facilities Acquisition, Construction and Improvement Services	\$15,371,376.22

LEA : 125234502 Haverford Township SD

Printed 12/30/2020 2:18:26 PM

Other Capital Projects Fund (39)

4600 Existing Building Improvement Services

Elementary

Secondary

Federal

Total

400 Purchased Property Services

450 Construction Services

15,371,376.22

Total Purchased Property Services **\$15,371,376.22**

Total 4600 Existing Building Improvement Services **\$15,371,376.22**

LEA : 125234502 Haverford Township SD

Printed 12/30/2020 2:18:33 PM

Other Capital Projects Fund (39)

5000 Other Expenditures and Financing Uses

Total

900 Other Uses of Funds

910 Redemption of Principal	10,091,086.03
Total Other Uses of Funds	\$10,091,086.03
Total 5000 Other Expenditures and Financing Uses	\$10,091,086.03

LEA : 125234502 Haverford Township SD

Printed 12/30/2020 2:18:33 PM

Other Capital Projects Fund (39)

5100 Debt Service / Other Expenditures and Financing Uses

Elementary

Secondary

Federal

Total

900 Other Uses of Funds

910 Redemption of Principal

10,091,086.03

Total Other Uses of Funds				\$10,091,086.03
Total 5100 Debt Service / Other Expenditures and Financing Uses				\$10,091,086.03

Page 146

LEA : 125234502 Haverford Township SD

Printed 12/30/2020 2:18:48 PM

	<u>General Fund(10)</u>	<u>Student Sponsored Activity Fund(21)</u>	<u>Public Purpose Trust(27)</u>	<u>Other Compt Approved (28)</u>	<u>Athletic / Activity(29)</u>
1000 <u>Instruction</u>					
1100 Regular Programs - Elementary / Secondary	49,387,452.18				
1200 Special Programs - Elementary / Secondary	23,896,396.60				
1300 Vocational Education	680,991.65				
1400 Other Instructional Programs - Elementary / Secondary	545,509.60				
1500 Nonpublic School Programs	13,508.00				
1600 Adult Education Programs	1,323,446.00				
Total Instruction	\$75,847,304.03				
2000 <u>Support Services</u>					
2100 Support Services - Students	5,821,336.90				
2200 Support Services - Instructional Staff	4,184,670.25				
2300 Support Services - Administration	5,698,734.19				
2400 Support Services - Pupil Health	2,229,915.53				
2500 Support Services - Business	1,419,119.15				
2600 Operation and Maintenance of Plant Services	8,720,157.93				
2700 Student Transportation Services	5,004,482.83				
2800 Support Services - Central	2,020,788.11				
2900 Other Support Services	112,532.19				
Total Support Services	\$35,211,737.08				
3000 <u>Operation of Non-Instructional Services</u>					
3200 Student Activities	1,374,928.28				
3300 Community Services	184,822.15				
Total Operation of Non-Instructional Services	\$1,559,750.43				
4000 <u>Facilities Acquisition, Construction and Improvement Services</u>					
4600 Existing Building Improvement Services					
Total Facilities Acquisition, Construction and Improvement Services					
5000 <u>Other Expenditures and Financing Uses</u>					
5100 Debt Service / Other Expenditures and Financing Uses	9,926,314.13				
5200 Interfund Transfers - Out	1,272,008.00				
Total Other Expenditures and Financing Uses	\$11,198,322.13				
TOTAL ACTUAL EXPENDITURES & OTHER FINANCING USES	\$123,817,113.67				

LEA : 125234502 Haverford Township SD

Printed 12/30/2020 2:18:48 PM

	<u>Capital Reserve (690.1850)(31)</u>	<u>Capital Reserve (1431)(32)</u>	<u>Other Capital Projects Fund(39)</u>	<u>Debt Service(40)</u>	<u>Permanent(90)</u>
1000 <u>Instruction</u>					
1100 Regular Programs - Elementary / Secondary					
1200 Special Programs - Elementary / Secondary					
1300 Vocational Education					
1400 Other Instructional Programs - Elementary / Secondary					
1500 Nonpublic School Programs					
1600 Adult Education Programs					
Total Instruction					
2000 <u>Support Services</u>					
2100 Support Services - Students					
2200 Support Services - Instructional Staff					
2300 Support Services - Administration			282,818.76		
2400 Support Services - Pupil Health					
2500 Support Services - Business					
2600 Operation and Maintenance of Plant Services					
2700 Student Transportation Services			349,601.00		
2800 Support Services - Central			323,921.25		
2900 Other Support Services					
Total Support Services			\$956,341.01		
3000 <u>Operation of Non-Instructional Services</u>					
3200 Student Activities					
3300 Community Services					
Total Operation of Non-Instructional Services					
4000 <u>Facilities Acquisition, Construction and Improvement Services</u>					
4600 Existing Building Improvement Services			15,371,376.22		
Total Facilities Acquisition, Construction and Improvement Services			\$15,371,376.22		
5000 <u>Other Expenditures and Financing Uses</u>					
5100 Debt Service / Other Expenditures and Financing Uses			10,091,086.03		
5200 Interfund Transfers - Out					
Total Other Expenditures and Financing Uses			\$10,091,086.03		
TOTAL ACTUAL EXPENDITURES & OTHER FINANCING USES			\$26,418,803.26		

LEA : 125234502 Haverford Township SD

Printed 12/30/2020 2:18:48 PM

	<u>Total</u>
1000 <u>Instruction</u>	
1100 Regular Programs - Elementary / Secondary	49,387,452.18
1200 Special Programs - Elementary / Secondary	23,896,396.60
1300 Vocational Education	680,991.65
1400 Other Instructional Programs - Elementary / Secondary	545,509.60
1500 Nonpublic School Programs	13,508.00
1600 Adult Education Programs	1,323,446.00
Total Instruction	\$75,847,304.03
2000 <u>Support Services</u>	
2100 Support Services - Students	5,821,336.90
2200 Support Services - Instructional Staff	4,184,670.25
2300 Support Services - Administration	5,981,552.95
2400 Support Services - Pupil Health	2,229,915.53
2500 Support Services - Business	1,419,119.15
2600 Operation and Maintenance of Plant Services	8,720,157.93
2700 Student Transportation Services	5,354,083.83
2800 Support Services - Central	2,344,709.36
2900 Other Support Services	112,532.19
Total Support Services	\$36,168,078.09
3000 <u>Operation of Non-Instructional Services</u>	
3200 Student Activities	1,374,928.28
3300 Community Services	184,822.15
Total Operation of Non-Instructional Services	\$1,559,750.43
4000 <u>Facilities Acquisition, Construction and Improvement Services</u>	
4600 Existing Building Improvement Services	15,371,376.22
Total Facilities Acquisition, Construction and Improvement Services	\$15,371,376.22
5000 <u>Other Expenditures and Financing Uses</u>	
5100 Debt Service / Other Expenditures and Financing Uses	20,017,400.16
5200 Interfund Transfers - Out	1,272,008.00
Total Other Expenditures and Financing Uses	\$21,289,408.16
TOTAL ACTUAL EXPENDITURES & OTHER FINANCING USES	\$150,235,916.93

LEA : 125234502 Haverford Township SD

Printed 12/30/2020 2:18:57 PM

PSERS Salary Data (Salary Data should relate to the General Fund only)

Amount	Description	Amount
	Total Salary Base for salaries subject to PSERS withholding	56,973,837.74
	Total Federally Funded salaries subject to PSERS withholding	170,664.77

Title I Expenditure Data

Amount	Description	Amount
	Expenditures Funded with Current Title I Funds	240,189.88
	Expenditures Funded with Carry over Title I Funds	25,894.00
Total Title I Expenditure Data		\$266,083.88

Benefits for Staff Relative to Collective Bargaining Agreements

	OBJECT	COVERED	NOT COVERED	TOTAL
10 General Fund				
	211 Medical Insurance			
	212 Dental Insurance			
	215 Eye Care Insurance			
	216 Prescription Insurance			
	271 Self-Insurance Medical Benefits	9,910,606.90		9,910,606.90
	272 Self-Insurance Dental Benefits	575,067.23		575,067.23
	275 Self-Insurance Eye Care Benefits			
	276 Self-Insurance Prescription Benefits	2,224,163.51		2,224,163.51
	FUND TOTAL	\$12,709,837.64		\$12,709,837.64
50 Enterprise Fund	No Self Insurance data to report			
	211 Medical Insurance			
	212 Dental Insurance			
	215 Eye Care Insurance			
	216 Prescription Insurance			
	271 Self-Insurance Medical Benefits			
	272 Self-Insurance Dental Benefits			
	275 Self-Insurance Eye Care Benefits			
	276 Self-Insurance Prescription Benefits			
	FUND TOTAL			
60 Internal Service Fund	No Self Insurance data to report			
	211 Medical Insurance			
	212 Dental Insurance			
	215 Eye Care Insurance			
	216 Prescription Insurance			
	271 Self-Insurance Medical Benefits			
	272 Self-Insurance Dental Benefits			
	275 Self-Insurance Eye Care Benefits			
	276 Self-Insurance Prescription Benefits			
	FUND TOTAL			
Total of All Funds		\$12,709,837.64		\$12,709,837.64

LEA : 125234502 Haverford Township SD

Printed 12/30/2020 2:19:09 PM

Function	Special Education (Prior Year)	Nonspecial Education (Prior Year)	Total (Prior Year)	Special Education (Current Year)	Nonspecial Education (Current Year)	Total (Current Year)
2120 Guidance Services	1,497,064.41	1,497,064.41	2,994,128.82	1,551,035.33	1,551,035.33	3,102,070.66
2140 Psychological Services	27,519.84	27,519.83	55,039.67	14,814.38	14,814.37	29,628.75
2150 Speech Pathology and Audiology Services						
2160 Social Work Services	170,077.40	170,077.40	340,154.80	172,794.76	172,794.77	345,589.53
2260 Instruction and Curriculum Development Services	414,421.60	621,632.39	1,036,053.99	415,529.62	623,294.42	1,038,824.04
2350 Legal and Accounting Services	203,973.78	22,663.75	226,637.53	255,077.55	28,341.95	283,419.50
2420 Medical Services	754,814.69	83,868.30	838,682.99	591,367.39	65,707.49	657,074.88
2440 Nursing Services	343,811.45	1,031,434.36	1,375,245.81	351,415.76	1,054,247.26	1,405,663.02
2700 Student Transportation Services	2,094,430.73	3,141,646.09	5,236,076.82	2,001,793.13	3,002,689.70	5,004,482.83
Total	\$5,506,113.90	\$6,595,906.53	\$12,102,020.43	\$5,353,827.92	\$6,512,925.29	\$11,866,753.21

LEA : 125234502 Haverford Township SD

Printed 12/30/2020 2:19:14 PM

	(PRINCIPAL AMOUNTS ONLY)							
<u>GOVERNMENTAL FUNDS/ ACTIVITIES</u>	Short-Term Borrowing	General Obligation Bonds/Notes	Authority Building Obligations	Other Long-Term Debt	Other Post- Employment Benefits (OPEB)	Compensated Absences	Net Pension Liability	Total
1. Debt at Beginning of Fiscal Year		107,385,000.00		7,172,608.30	10,856,416.00	1,407,832.00	190,543,274.00	317,365,130.30
2. Additional Debt Incurred During Year		43,310,000.00		2,298,419.00	355,394.00	234,902.00		46,198,715.00
3. Retirements and Repayments		15,800,000.00		656,135.00			2,799,724.00	19,255,859.00
4. Debt at End of Fiscal Year		134,895,000.00		8,814,892.30	11,211,810.00	1,642,734.00	187,743,550.00	344,307,986.30
5. Accreted Interest at End Of Fiscal Year								
6. Total Debt and Accreted Interest		134,895,000.00		8,814,892.30	11,211,810.00	1,642,734.00	187,743,550.00	344,307,986.30
7. Current Portion P&I - Due within 1 year		11,644,833.00		1,644,240.00				13,289,073.00
8. Interest Paid during current fiscal year		4,152,827.00						4,152,827.00

(PRINCIPAL AMOUNTS ONLY)								
<u>PROPRIETARY FUNDS</u>	Short-Term Borrowing	General Obligation Bonds/Notes	Authority Building Obligations	Other Long-Term Debt	Other Post- Employment Benefits (OPEB)	Compensated Absences	Net Pension Liability	Total
1. Debt at Beginning of Fiscal Year					107,915.00		2,484,691.00	2,592,606.00
2. Additional Debt Incurred During Year								
3. Retirements and Repayments					6,051.00		244,069.00	250,120.00
4. Debt at End of Fiscal Year					101,864.00		2,240,622.00	2,342,486.00
5. Accreted Interest at End Of Fiscal Year								
6. Total Debt and Accreted Interest					101,864.00		2,240,622.00	2,342,486.00
7. Current Portion P&I - Due within 1 year								
8. Interest Paid during current fiscal year								

LEA : 125234502 Haverford Township SD

Printed 12/30/2020 2:19:14 PM

Total Principal and Interest Payments Made by Your School - All Funds

Function	Fund		Principal (910)	Principal (920)	Interest (830)	Total (Principal +Interest)	Misc Other Uses (990)
5110	10	General Fund	5,765,000.00		4,152,826.29	9,917,826.29	
5110	20	Special Revenue Funds					
5110	30	Capital Projects Funds					
5110	40	Debt Service Fund					
5110	90	Permanent Fund					
5120	10	General Fund					
5120	20	Special Revenue Funds					
5120	30	Capital Projects Funds	10,091,086.03			10,091,086.03	
5120	40	Debt Service Fund					
Total Debt Payments - Governmental Funds			\$15,856,086.03		\$4,152,826.29	\$20,008,912.32	

Function	Fund		Principal (910)	Principal (920)	Interest (830)	Total (Principal +Interest)
5110	50	Enterprise Fund				
5110	60	Internal Service Fund				
5120	50	Enterprise Fund				
5120	60	Internal Service Fund				
Total Debt Payments - Proprietary Funds						

LEA : 125234502 Haverford Township SD

Printed 12/30/2020 2:19:14 PM

Debt Details
Governmental Funds/ Activities

Debt Category	Debt Issue Date (MM/YYYY)	Principal Amounts Only				Current Portion Due Within One Year (Principal and Interest)	Interest Paid During Fiscal Year
		Debt at Beginning of Fiscal Year	Additions	Reductions / Repayments	Debt at End of Fiscal Year		
General Obligation Bonds/Notes – CIB	12/2019		34,995,000.00		34,995,000.00	1,054,350.00	209,870.00
General Obligation Bonds/Notes – CIB	12/2019		8,315,000.00	100,000.00	8,215,000.00	435,750.00	83,150.00
General Obligation Bonds/Notes – CIB	03/2019	16,355,000.00		225,000.00	16,130,000.00	957,425.00	693,722.00
General Obligation Bonds/Notes – CIB	12/2018	9,380,000.00		5,000.00	9,375,000.00	337,269.00	332,406.00
General Obligation Bonds/Notes – CIB	06/2017	21,050,000.00		2,870,000.00	18,180,000.00	4,348,150.00	780,500.00
General Obligation Bonds/Notes – CIB	01/2015	13,525,000.00		60,000.00	13,465,000.00	677,123.00	668,323.00
General Obligation Bonds/Notes – CIB	01/2015	4,230,000.00		2,200,000.00	2,030,000.00	2,111,200.00	152,200.00
General Obligation Bonds/Notes – CIB	01/2009	42,845,000.00		10,340,000.00	32,505,000.00	1,723,566.00	1,232,656.00
Extended Term Financing Agreements		1,441,485.00	673,522.00	656,135.00	1,458,872.00	619,457.00	
Other Long Term Debt/Liabilities		5,731,123.30	1,624,897.00		7,356,020.30	1,024,783.00	
Compensated Absences		1,407,832.00	234,902.00		1,642,734.00		
Other Post-Employment Benefits (OPEB)		10,856,416.00	355,394.00		11,211,810.00		
Net Pension Liability		190,543,274.00		2,799,724.00	187,743,550.00		
Totals for Debt Entered:		\$317,365,130.30	\$46,198,715.00	\$19,255,859.00	\$344,307,986.30	\$13,289,073.00	\$4,152,827.00

Bond Details
Proprietary Funds

Debt Category	Debt Issue Date (MM/YYYY)	Principal Amounts Only				Current Portion Due Within One Year (Principal and Interest)	Interest Paid During Fiscal Year
		Debt at Beginning of Fiscal Year	Additions	Reductions / Repayments	Debt at End of Fiscal Year		
Other Post-Employment Benefits (OPEB)		107,915.00		6,051.00	101,864.00		
Net Pension Liability		2,484,691.00		244,069.00	2,240,622.00		
Totals for Debt Entered:		\$2,592,606.00		\$250,120.00	\$2,342,486.00		

LEA : 125234502 Haverford Township SD

General Fund (10)

Section 1: Tuition/Purchased Services as Reported within Expenditure Detail	Amount
Tuition Reported in General Fund Expenditures 1000-560	6,718,105.59
Purchased Services in General Fund Expenditures 1000-594 and 1000-597	
Section 1 Total	\$6,718,105.59

Section 2: Tuition Paid to Institution Types During Fiscal Year	Tuition Paid For Nonspecial Education	Tuition Paid For Special Education	Total
1 1306 Institutions			
2 Institutionalized Children's Programs			
3 Juveniles Incarcerated in Adult Facilities			
4 Residential Treatment Facilities			
5 Other Local Education Agencies		5,409.37	5,409.37
6 Brick and Mortar Charter Schools			
7 Cyber Charter Schools	226,568.13	113,682.75	340,250.88
8 Career and Technology Centers	680,991.65		680,991.65
9 Approved Private Schools		2,787,499.91	2,787,499.91
10 PA Chartered Schools for the Deaf and Blind			
11 Private Residential Rehabilitative Institutions			
12 Juvenile Detention Centers		6,592.65	6,592.65
13 Special Program Jointures			
14 Other Tuition Not Included Elsewhere In This Section	1,323,446.00	1,573,915.13	2,897,361.13
Section 2 Total	\$2,231,005.78	\$4,487,099.81	\$6,718,105.59

LEA : 125234502 Haverford Township SD

Printed 12/30/2020 2:19:25 PM

Food Service / Cafeteria Operations Fund (51)

3000 Operation of Non-Instructional Services		Total
100	<u>Personnel Services – Salaries</u>	
100	Personnel Services – Salaries	685,655.68
Total Personnel Services – Salaries		\$685,655.68
200	<u>Personnel Services – Employee Benefits</u>	
210	Group Insurance – Contracted Provider	219,604.51
220	Social Security Contributions	50,320.49
230	PSERS Retirement Contributions	226,738.16
280	Other Post-Employment Benefits (OPEB)	(191,143.00)
299	All Other Employee Benefits	(10,781.00)
Total Personnel Services – Employee Benefits		\$294,739.16
400	<u>Purchased Property Services</u>	
490	Other Purchased Property Services	53,456.72
Total Purchased Property Services		\$53,456.72
500	<u>Other Purchased Services</u>	
570	Food Service Management	97,595.00
580	Travel	252.88
Total Other Purchased Services		\$97,847.88
600	<u>Supplies</u>	
610	General Supplies	28,270.88
630	Food	559,049.93
Total Supplies		\$587,320.81
700	<u>Property</u>	
740	Depreciation	90,168.00
Total Property		\$90,168.00
800	<u>Other Objects</u>	
810	Dues and Fees	266.28
Total Other Objects		\$266.28
Total 3000 Operation of Non-Instructional Services		\$1,809,454.53

LEA : 125234502 Haverford Township SD

Printed 12/30/2020 2:19:25 PM

Food Service / Cafeteria Operations Fund (51)

3100 Food Services	Elementary	Secondary	Federal	Total
100 <u>Personnel Services – Salaries</u>				
100 Personnel Services – Salaries				685,655.68
Total Personnel Services – Salaries				\$685,655.68
200 <u>Personnel Services – Employee Benefits</u>				
210 Group Insurance – Contracted Provider				219,604.51
220 Social Security Contributions				50,320.49
230 PSERS Retirement Contributions				226,738.16
280 Other Post-Employment Benefits (OPEB)				(191,143.00)
299 All Other Employee Benefits				(10,781.00)
Total Personnel Services – Employee Benefits				\$294,739.16
400 <u>Purchased Property Services</u>				
490 Other Purchased Property Services				53,456.72
Total Purchased Property Services				\$53,456.72
500 <u>Other Purchased Services</u>				
570 Food Service Management				97,595.00
580 Travel				252.88
Total Other Purchased Services				\$97,847.88
600 <u>Supplies</u>				
610 General Supplies				28,270.88
630 Food				559,049.93
Total Supplies				\$587,320.81
700 <u>Property</u>				
740 Depreciation				90,168.00
Total Property				\$90,168.00
800 <u>Other Objects</u>				
810 Dues and Fees				266.28
Total Other Objects				\$266.28
Total 3100 Food Services				\$1,809,454.53

LEA : 125234502 Haverford Township SD

Printed 12/30/2020 2:19:21 PM

Internal Service Fund (60)

2000 Support Services

Total

200	<u>Personnel Services – Employee Benefits</u>	
270	Group Insurance – Self-Insurance	10,793,767.00
Total Personnel Services – Employee Benefits		\$10,793,767.00
300	<u>Purchased Professional and Technical Services</u>	
390	Other Purchased Professional and Technical Services	1,024,026.00
Total Purchased Professional and Technical Services		\$1,024,026.00
Total 2000 Support Services		\$11,817,793.00

LEA : 125234502 Haverford Township SD

Printed 12/30/2020 2:19:21 PM

Internal Service Fund (60)

2800 Support Services – Central

Elementary Secondary Federal Total

200 <u>Personnel Services – Employee Benefits</u>				
270 Group Insurance – Self-Insurance				10,793,767.00
Total Personnel Services – Employee Benefits				\$10,793,767.00
300 <u>Purchased Professional and Technical Services</u>				
390 Other Purchased Professional and Technical Services				1,024,026.00
Total Purchased Professional and Technical Services				\$1,024,026.00
Total 2800 Support Services – Central				\$11,817,793.00

LEA : 125234502 Haverford Township SD

Printed 12/30/2020 2:19:21 PM

Internal Service Fund (60)

2890 Other Support Services Central	<u>Elementary</u>	<u>Secondary</u>	<u>Federal</u>	<u>Total</u>
200 <u>Personnel Services – Employee Benefits</u>				
270 Group Insurance – Self-Insurance				10,793,767.00
Total Personnel Services – Employee Benefits				\$10,793,767.00
300 <u>Purchased Professional and Technical Services</u>				
390 Other Purchased Professional and Technical Services				1,024,026.00
Total Purchased Professional and Technical Services				\$1,024,026.00
Total 2890 Other Support Services Central				\$11,817,793.00

	<u>Food Service(51)</u>	<u>Child Care Operations(52)</u>	<u>Other Enterprise(58)</u>	<u>Internal Service(60)</u>	<u>Total</u>
2000 <u>Support Services</u>					
2800 Support Services - Central				11,817,793.00	11,817,793.00
Total Support Services				\$11,817,793.00	\$11,817,793.00
3000 <u>Operation of Non-Instructional Services</u>					
3100 Food Services	1,809,454.53				1,809,454.53
Total Operation of Non-Instructional Services	\$1,809,454.53				\$1,809,454.53
TOTAL ACTUAL EXPENDITURES & OTHER FINANCING USES	\$1,809,454.53			\$11,817,793.00	\$13,627,247.53

LEA : 125234502 Haverford Township SD

Printed 12/30/2020 2:19:40 PM

Fund	School	School Number	Local Personnel	Local Nonpersonnel	State Personnel	State Nonpersonnel	Federal Personnel	Federal Nonpersonnel	Total	Explanation
10										
	Chatham Park El Sch	1871	6,805,741.17	576,462.94	1,459,590.96	123,630.93	56,357.23	53,128.70	9,074,911.93	
	Chestnutwold El Sch	1876	6,846,462.44	599,795.78	1,468,324.23	128,635.00	56,700.32	53,709.31	9,153,627.08	
	Coopertown El Sch	1877	6,820,500.76	533,117.05	1,462,756.37	114,334.77	55,998.84	44,224.37	9,030,932.16	
	Haverford MS	1878	18,818,371.67	1,722,718.33	4,035,875.66	369,462.20	155,212.89	136,756.70	25,238,397.45	
	Haverford SHS	1879	22,598,917.62	2,404,784.12	4,846,669.15	515,741.21	186,621.53	170,972.13	30,723,705.76	
	Lynnewood El Sch	1874	7,073,588.56	518,340.41	1,517,034.76	111,165.70	179,297.19	49,808.44	9,449,235.06	
	Manoa El Sch	1875	8,102,619.22	637,673.69	1,737,725.46	136,758.47	197,506.00	59,350.81	10,871,633.65	
Total			77,066,201.44	6,992,892.32	16,527,976.59	1,499,728.28	887,694.00	567,950.46	103,542,443.09	